

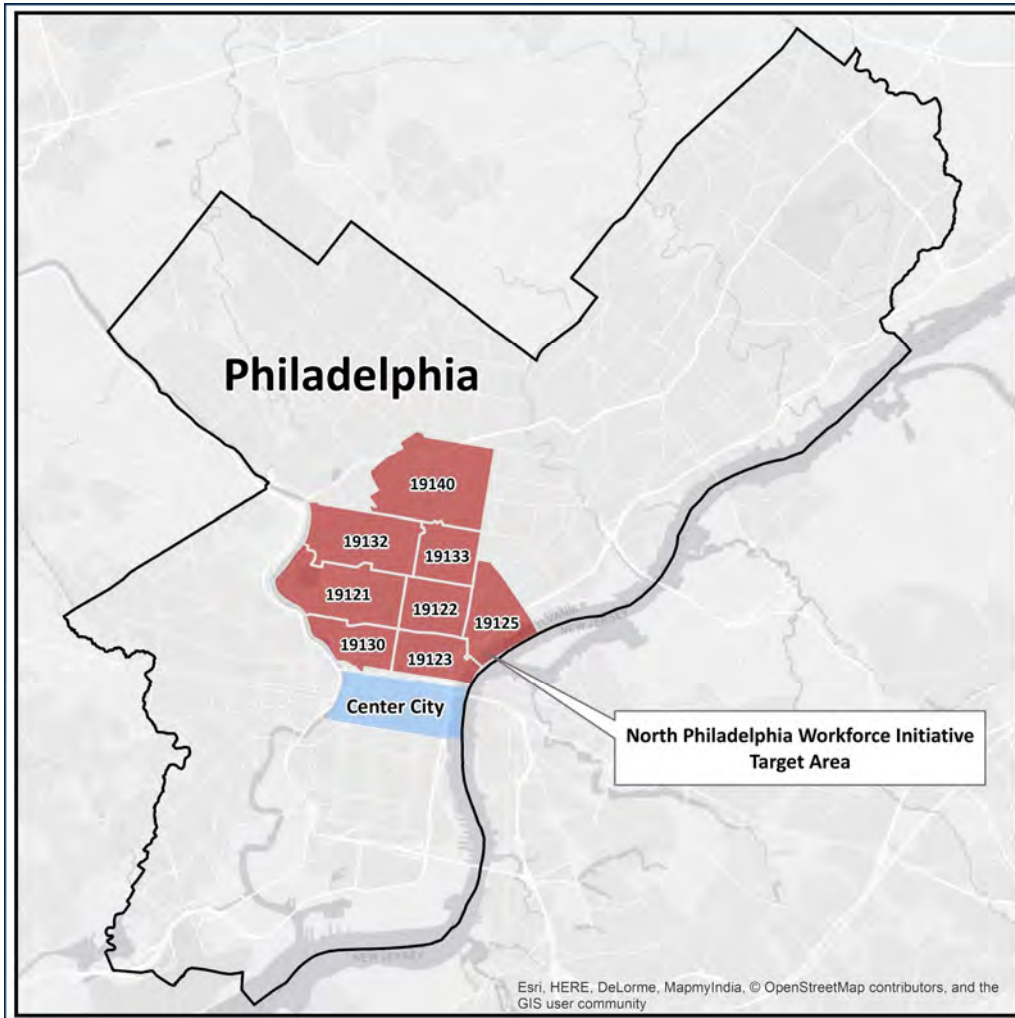
Foundational Analytics for the Lenfest North Philadelphia Workforce Initiative

Meg Shope Koppel, Ph.D., Chief Research Officer

Philadelphia Works

January 16, 2019





The Lenfest North Philadelphia Workforce Initiative (LNPWI) Area is comprised of eight ZIP Codes.

Lenfest North Philadelphia Workforce Initiative Area by the Numbers

- **275,453** residents
- **43%** employment rate
- **\$25,000** median income
- **32%** Hispanic/Latino
- **1 in 4** residents 25-64 don't have a high school diploma
- **7%** are not fluent in English
- **1 in 5** residents have at least one disability
- **4%** of residents 18 years and over are veterans
- **24%** of residents 16-24 are opportunity youth
- **23,200** returning citizens in the last 6 years

Methodology

Data Source	Geographic Unit
ACS PUMS 2012-2016	PUMAs
ACS 2012-2016 5-Year Estimates	Census Tracts
LEHD 2015	Census Tracts
CWDS	Statewide
CMS	ZIP Codes
Database USA	ZIP Codes

- ACS : American Community Survey
- PUMS: Public Use Microdata Sample
- PUMAs: Public Use Microdata Areas
- LEHD: Longitudinal Employer Household Dynamics Program
- CWDS: Commonwealth Workforce Development System
- CMS: Philadelphia Works Contract Management System

Framework



People



Employment



Priority Populations



Resources and Investments

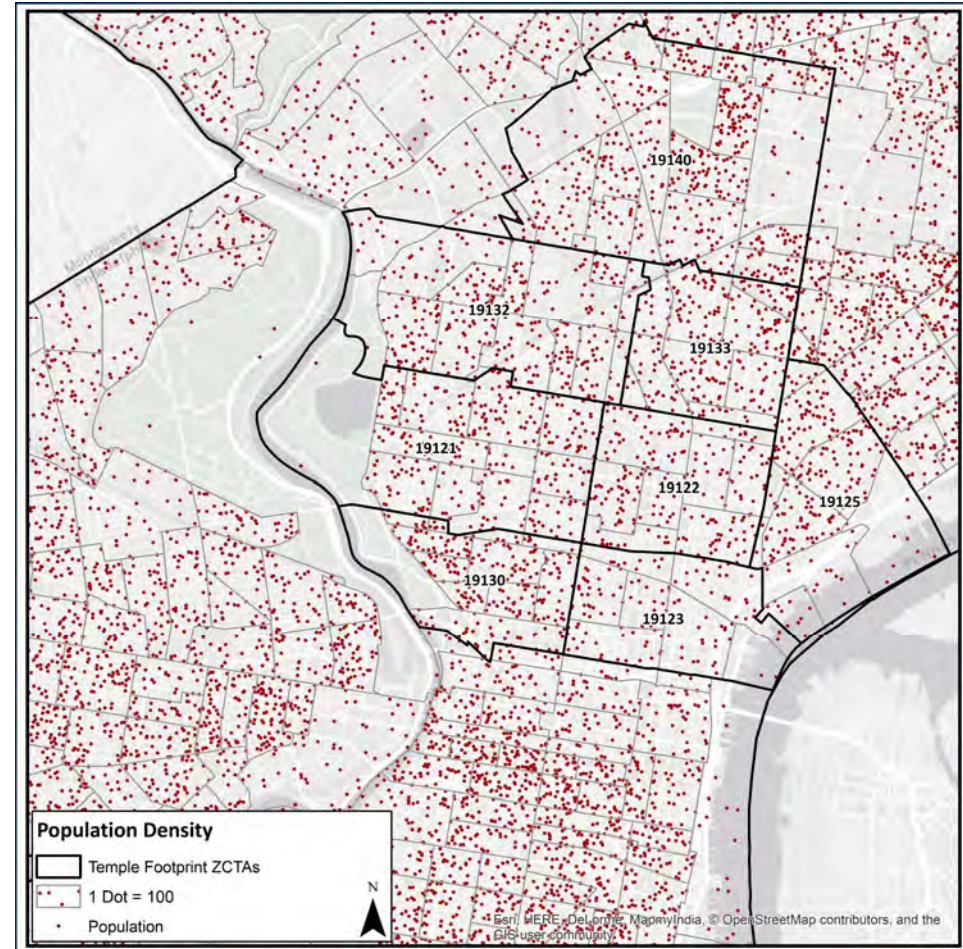
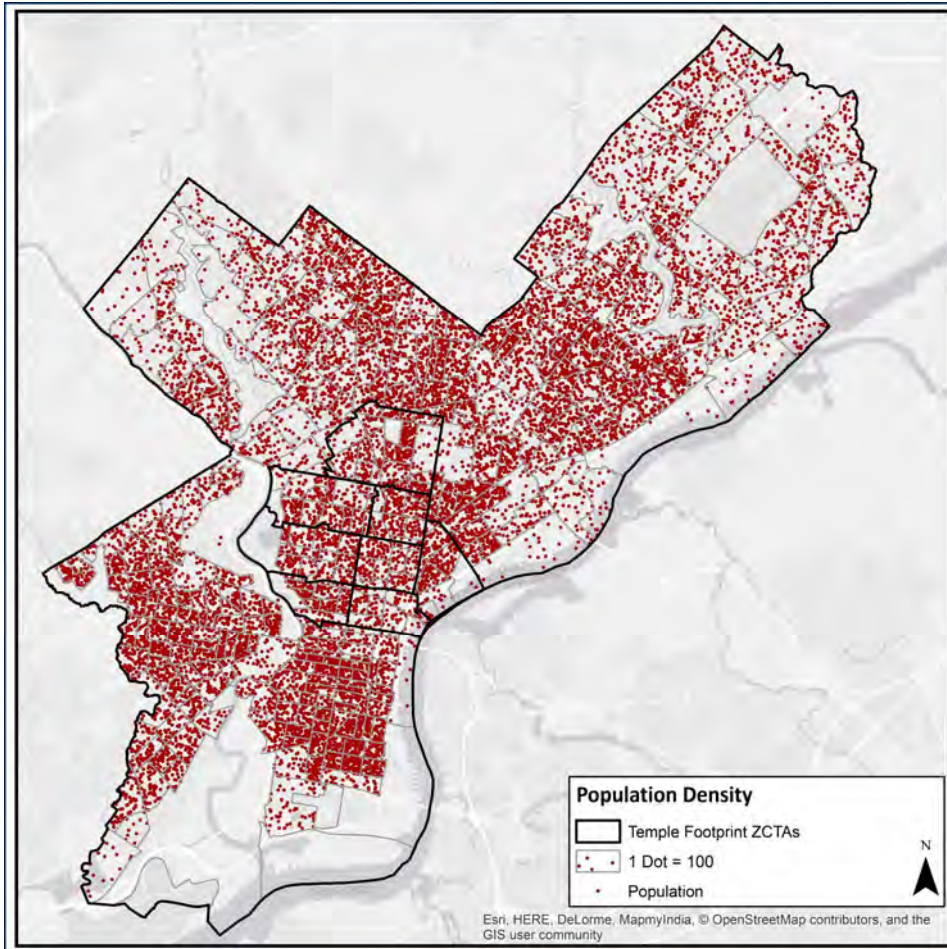
Population Density
Age Distribution
Race and Ethnicity
**Educational Attainment
and School Enrollment**
Income and Poverty

People

Population Density

The **275,453** residents in the LNPWI Area make up **18%** of the total population of Philadelphia.

Population Density



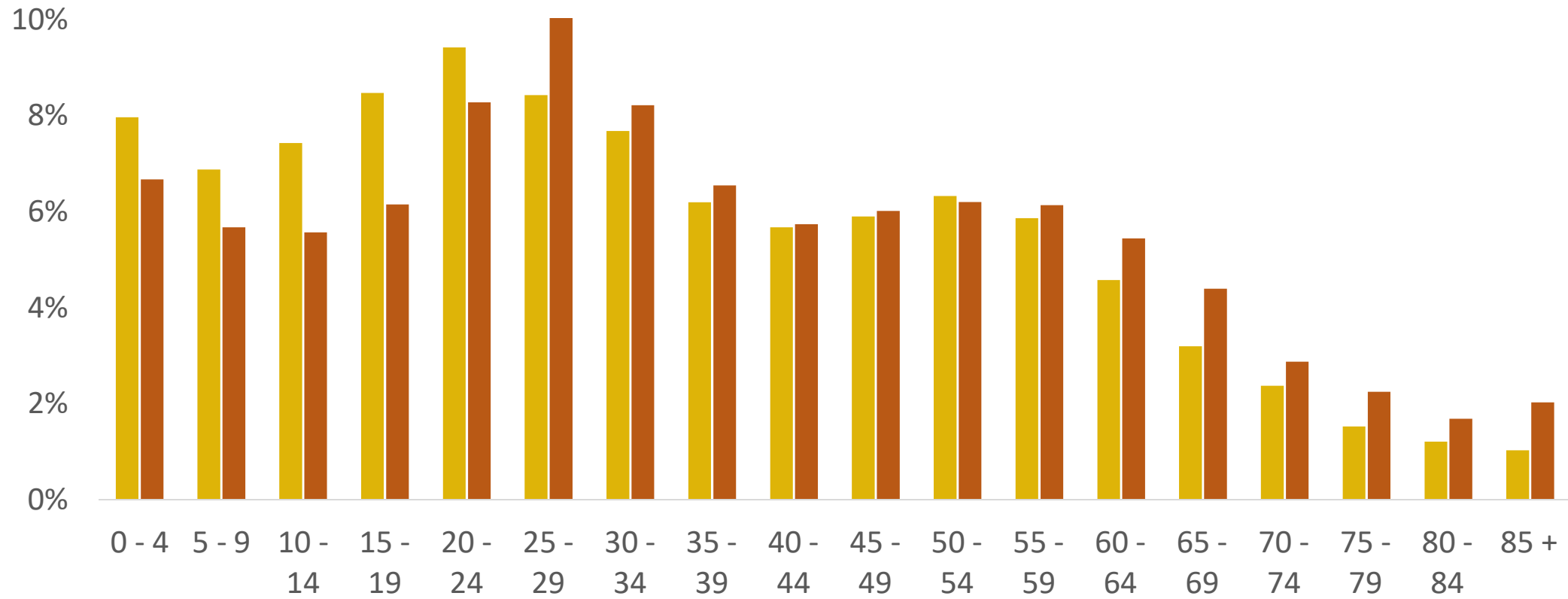
Source: Philadelphia Works analysis of American Community Survey 5-Year Estimates, 2012-2016

Age Distribution

The population of the LNPWI Area is **young**, with a median age of **30**.

Age Distribution

■ Target Area ■ Comparison

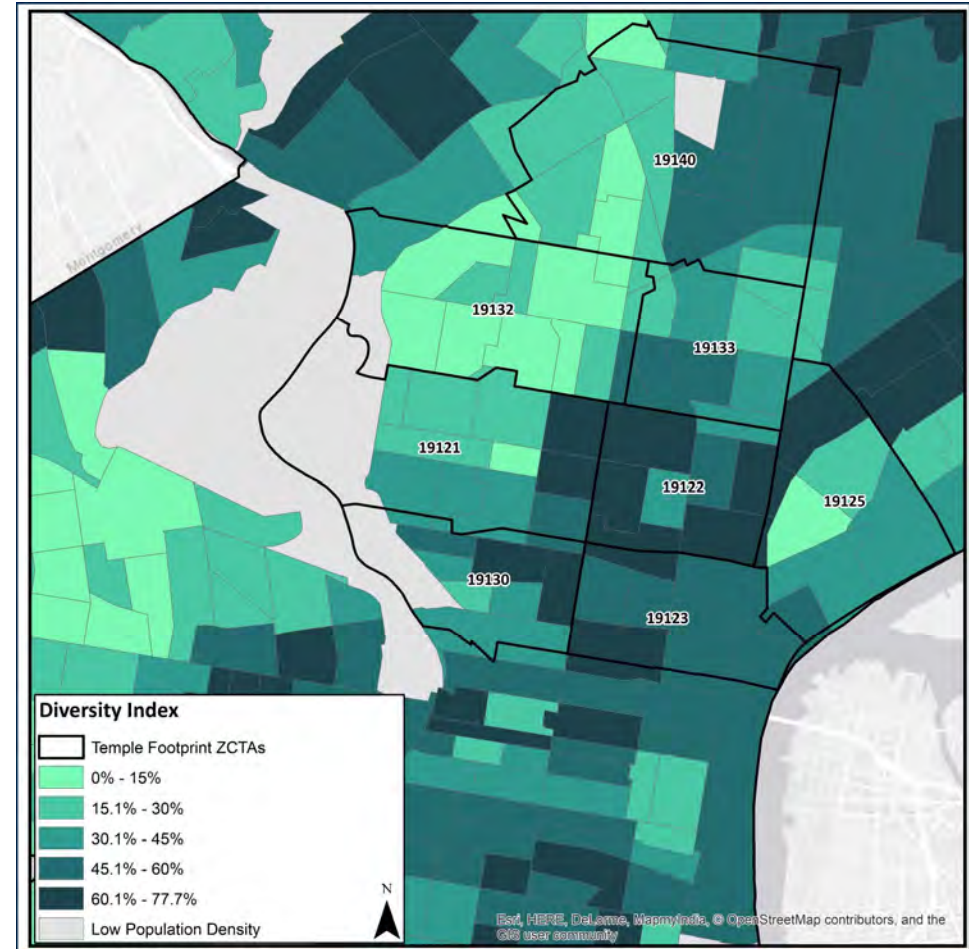
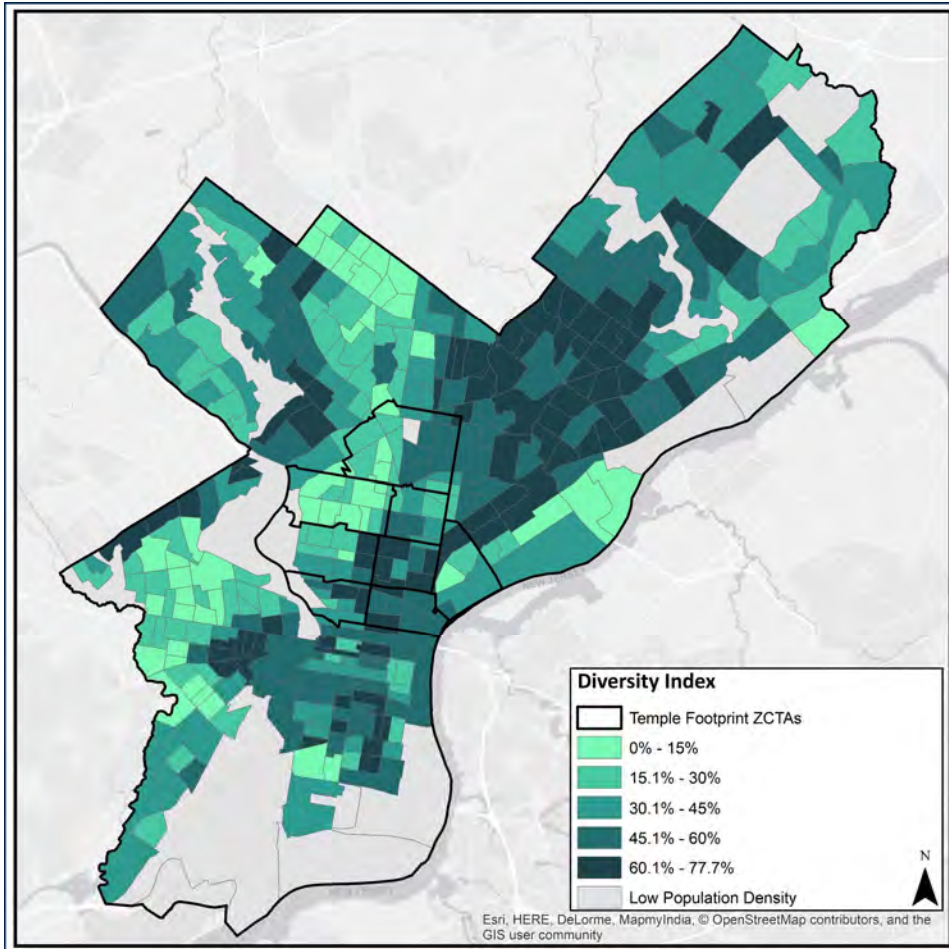


Source: Philadelphia Works analysis of ACS PUMS, 2012-2016

Race and Ethnicity

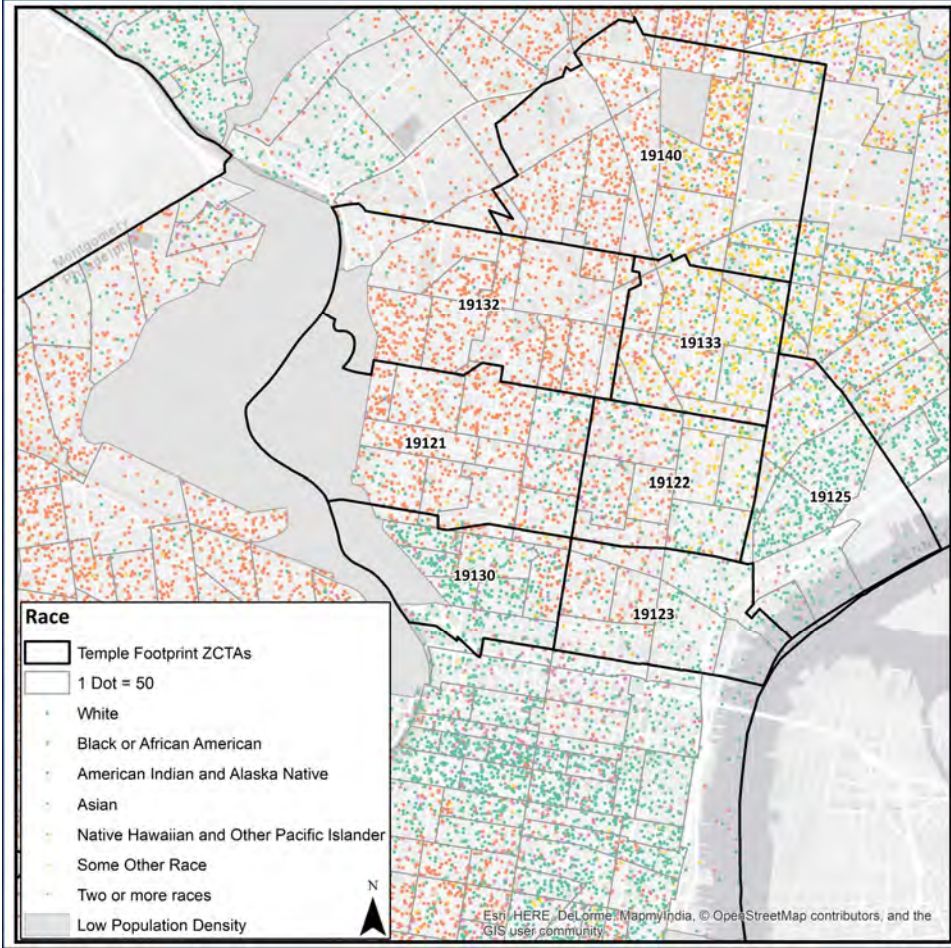
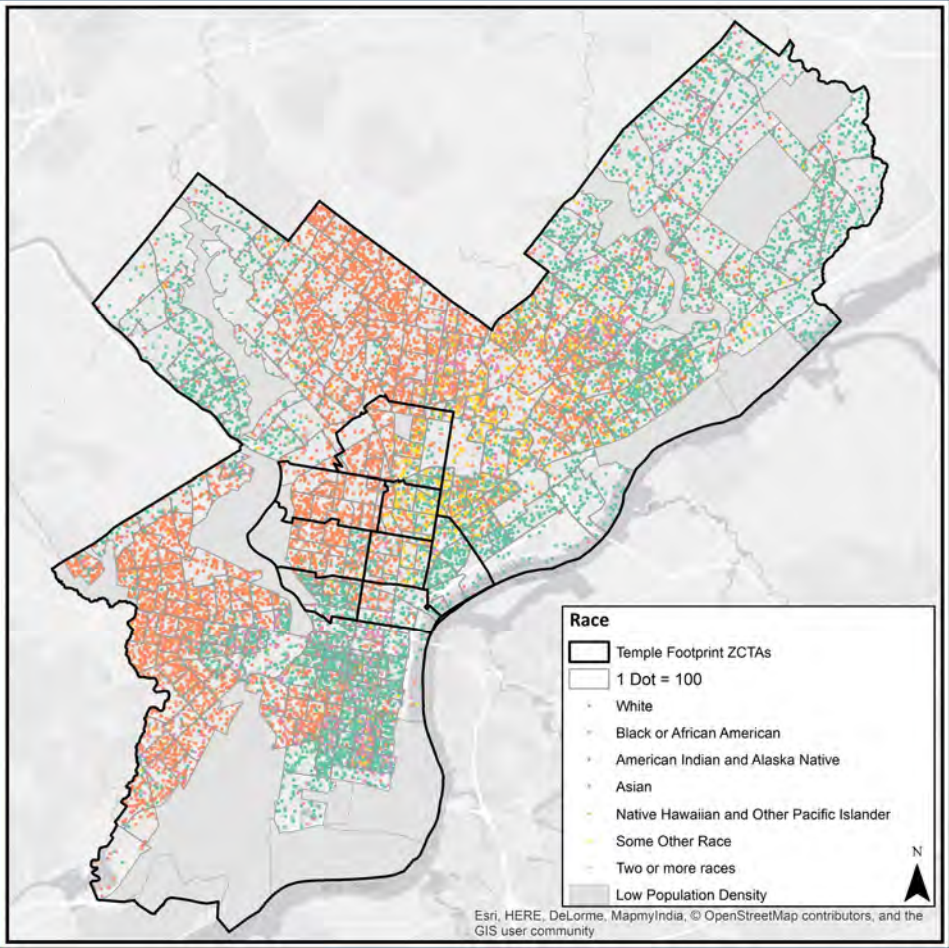
Some parts of the Target Area are
very **racially and
ethnically diverse.**

Diversity Index



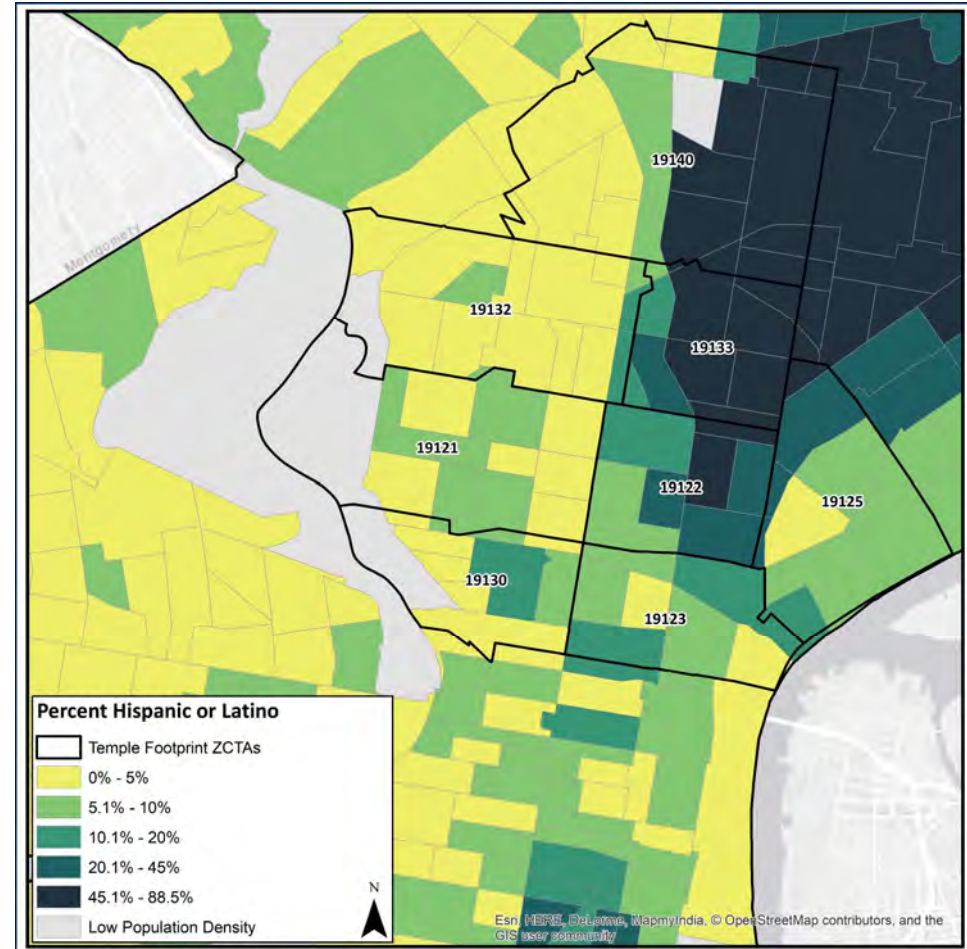
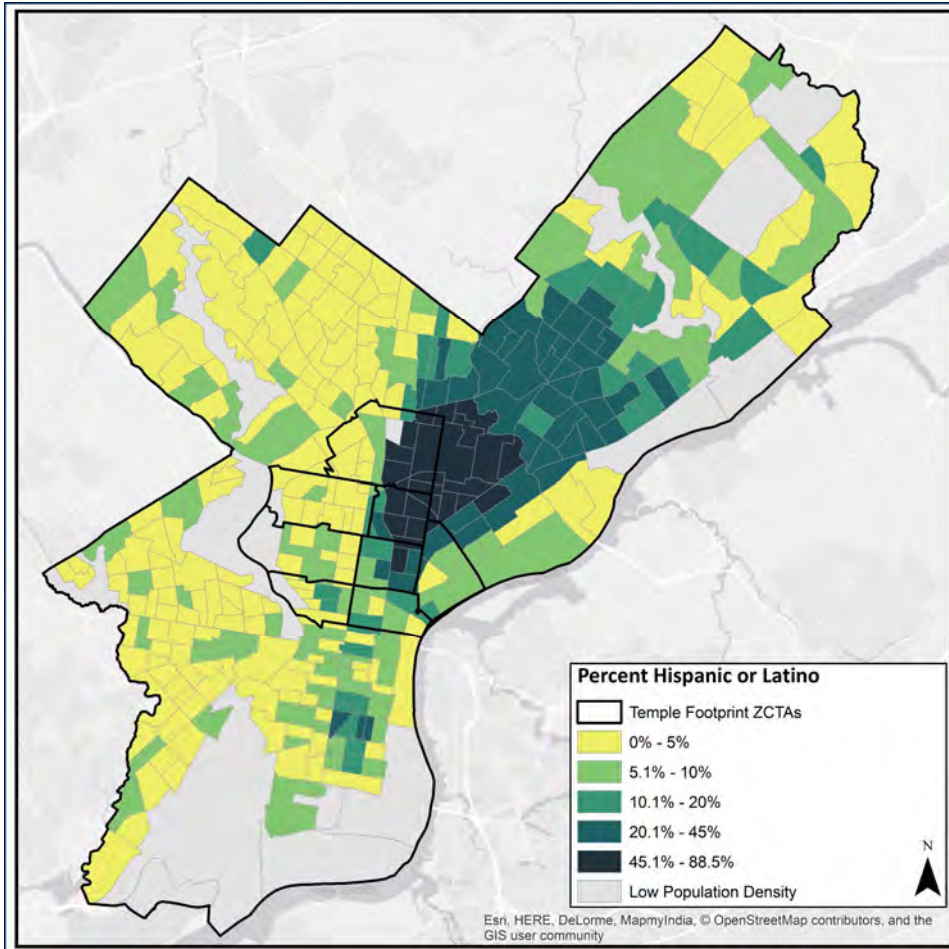
Source: Philadelphia Works analysis of American Community Survey 5-Year Estimates, 2012-2016

Racial Distribution



Source: Philadelphia Works analysis of American Community Survey 5-Year Estimates, 2012-2016

Hispanic/Latino Population

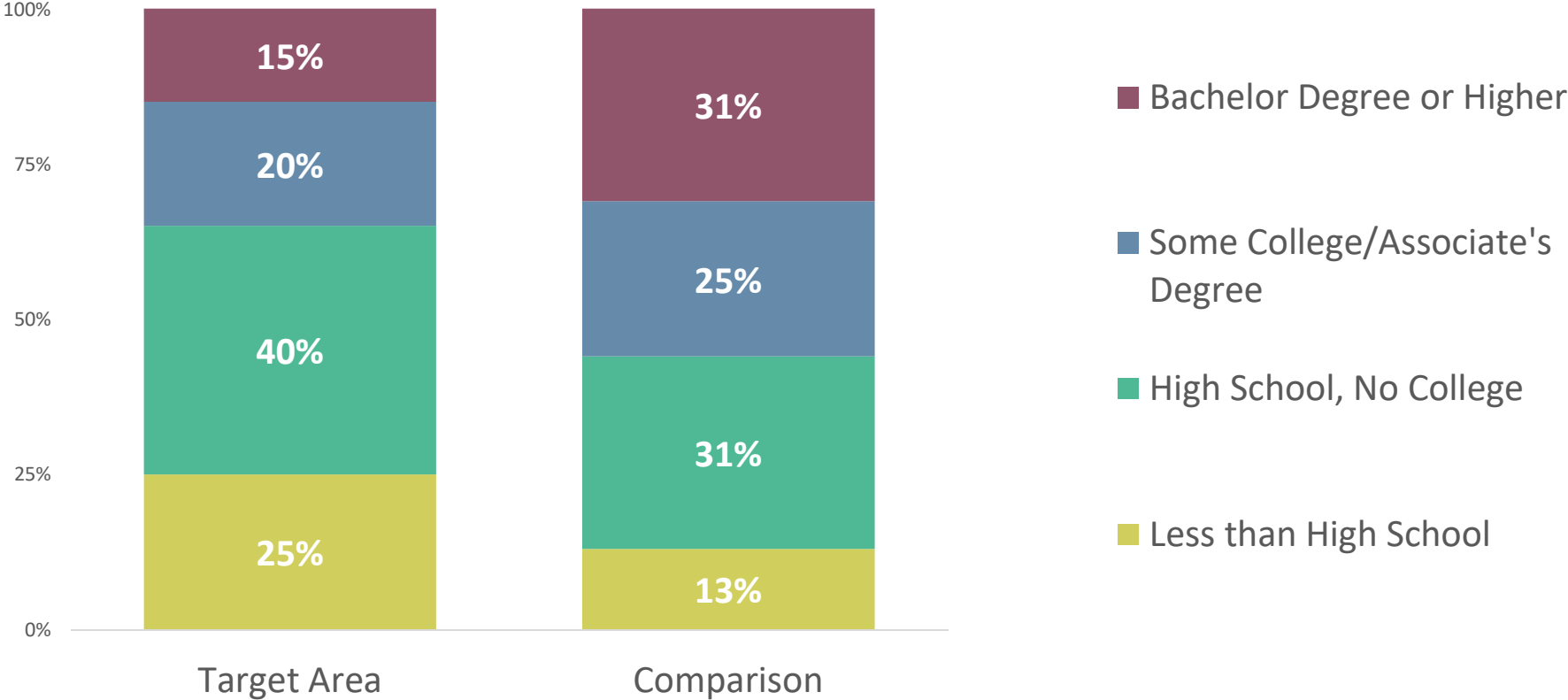


Source: Philadelphia Works analysis of American Community Survey 5-Year Estimates, 2012-2016

Educational Attainment

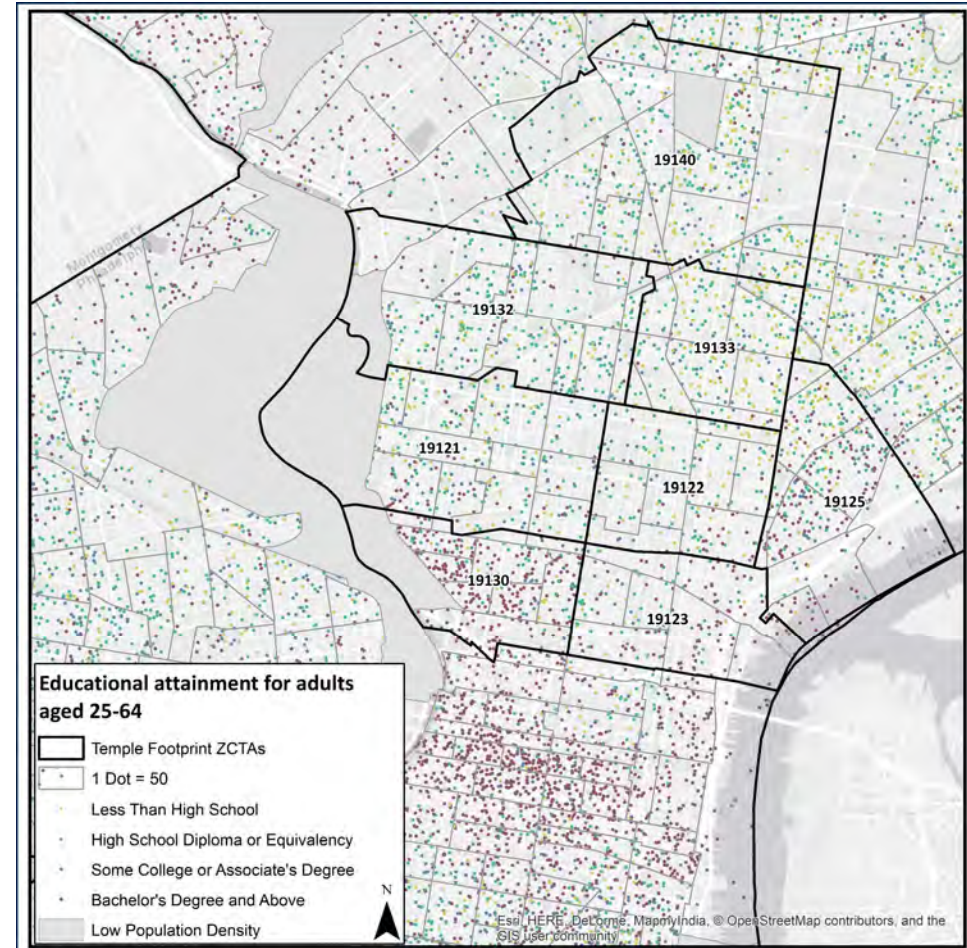
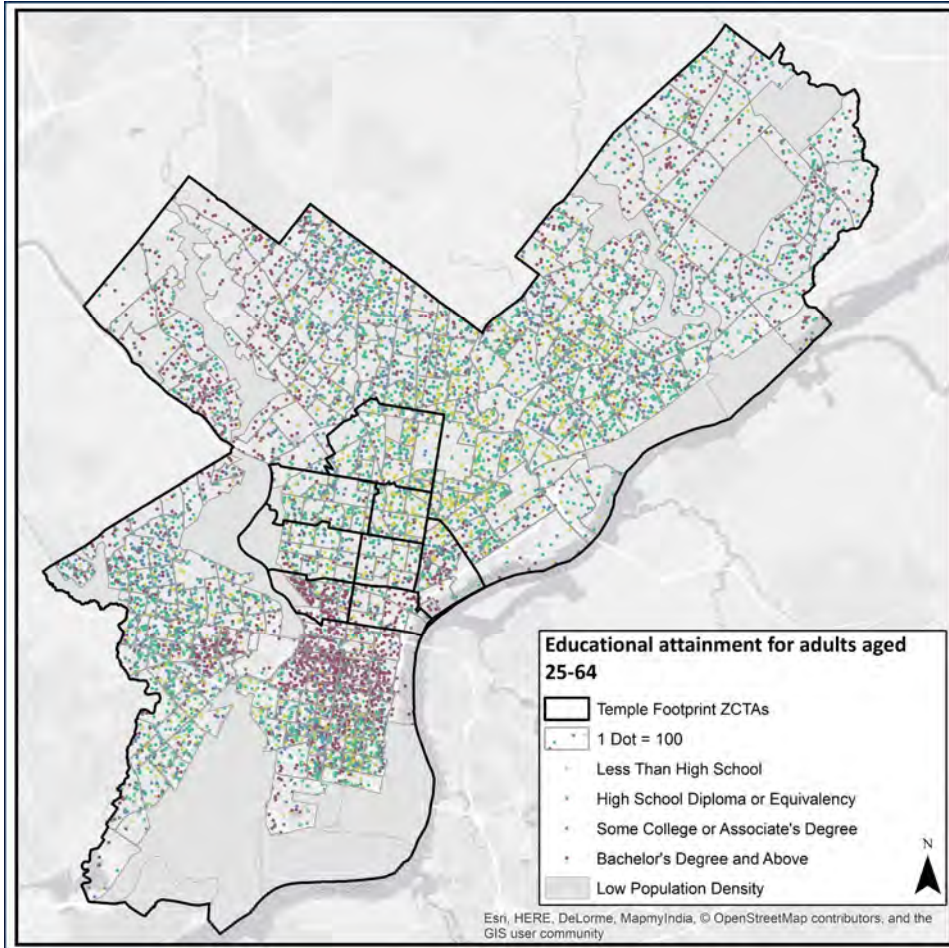
1 in 4 residents between the
ages of 25 to 64 do not have a high
school diploma.

Educational Attainment



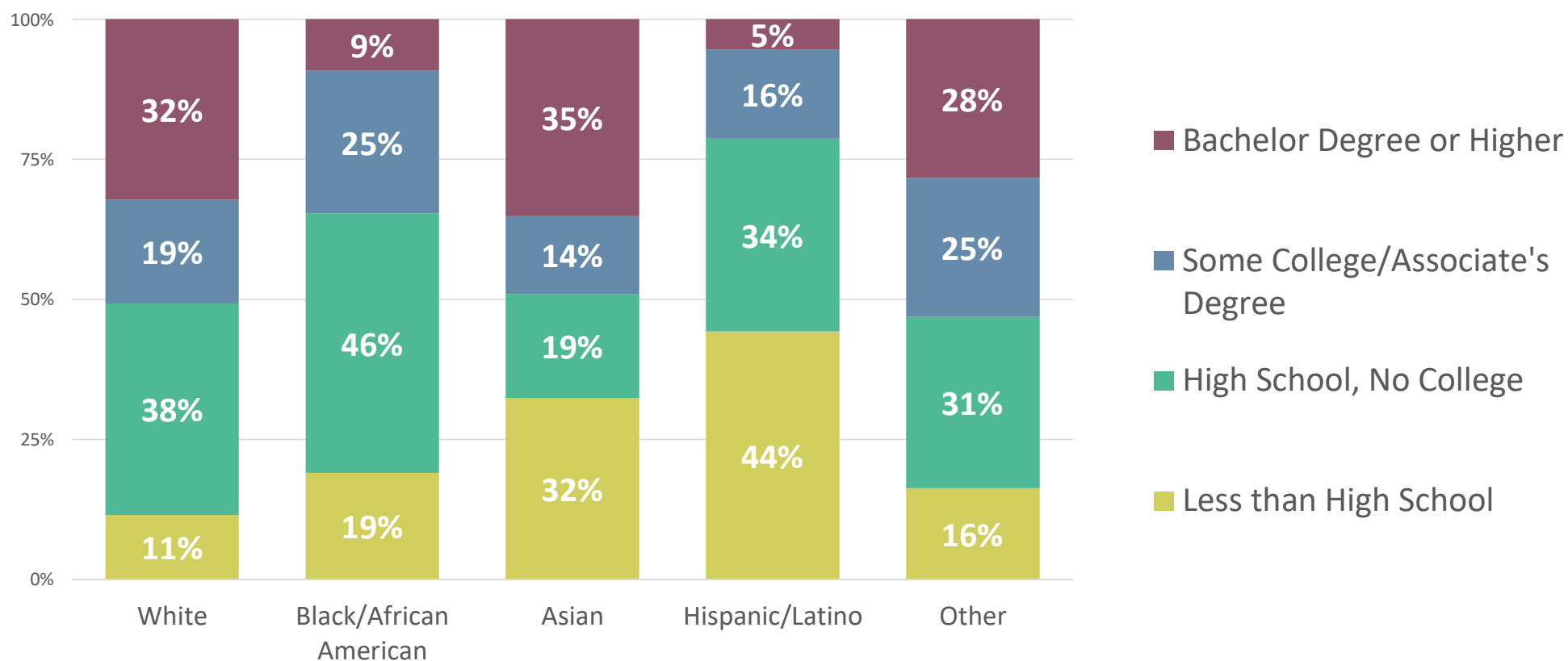
Source: Philadelphia Works analysis of ACS PUMS, 2012-2016

Educational Attainment



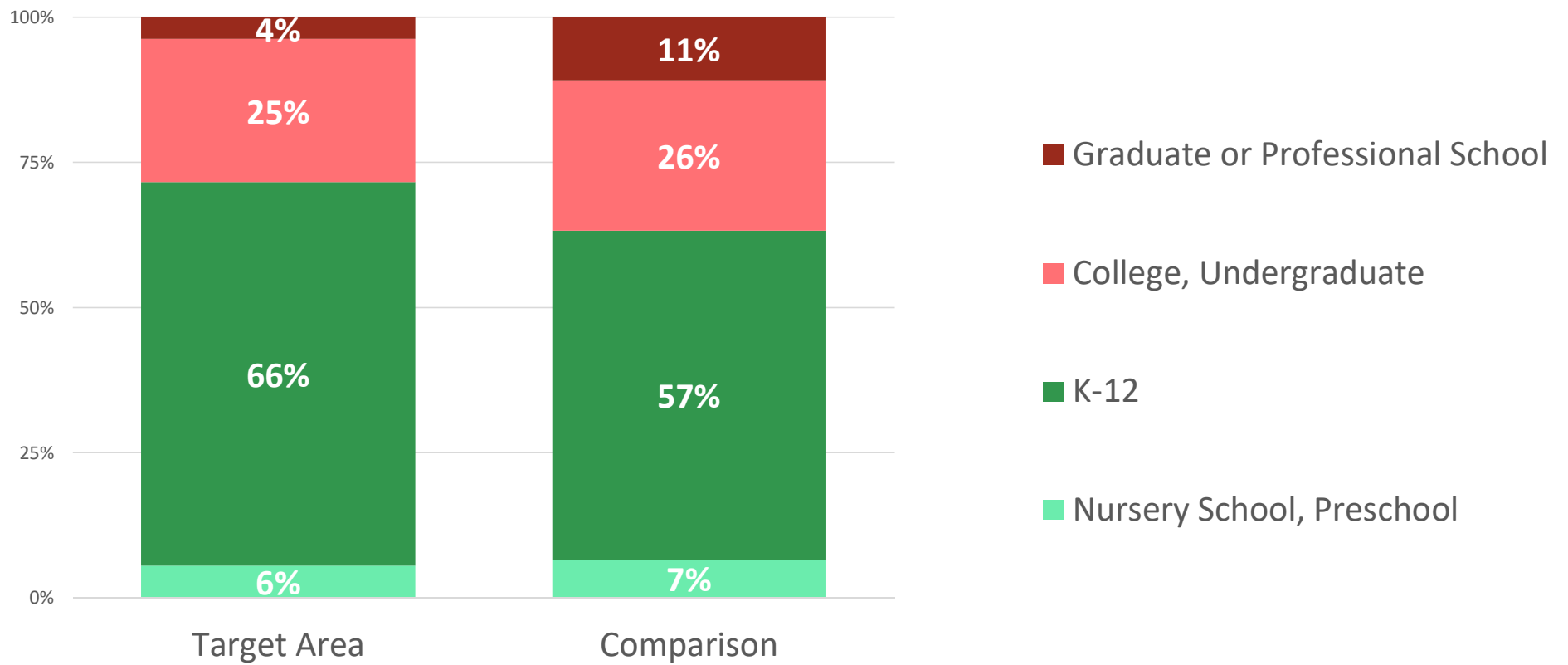
Source: Philadelphia Works analysis of American Community Survey 5-Year Estimates, 2012-2016

Educational Attainment by Race/Ethnicity



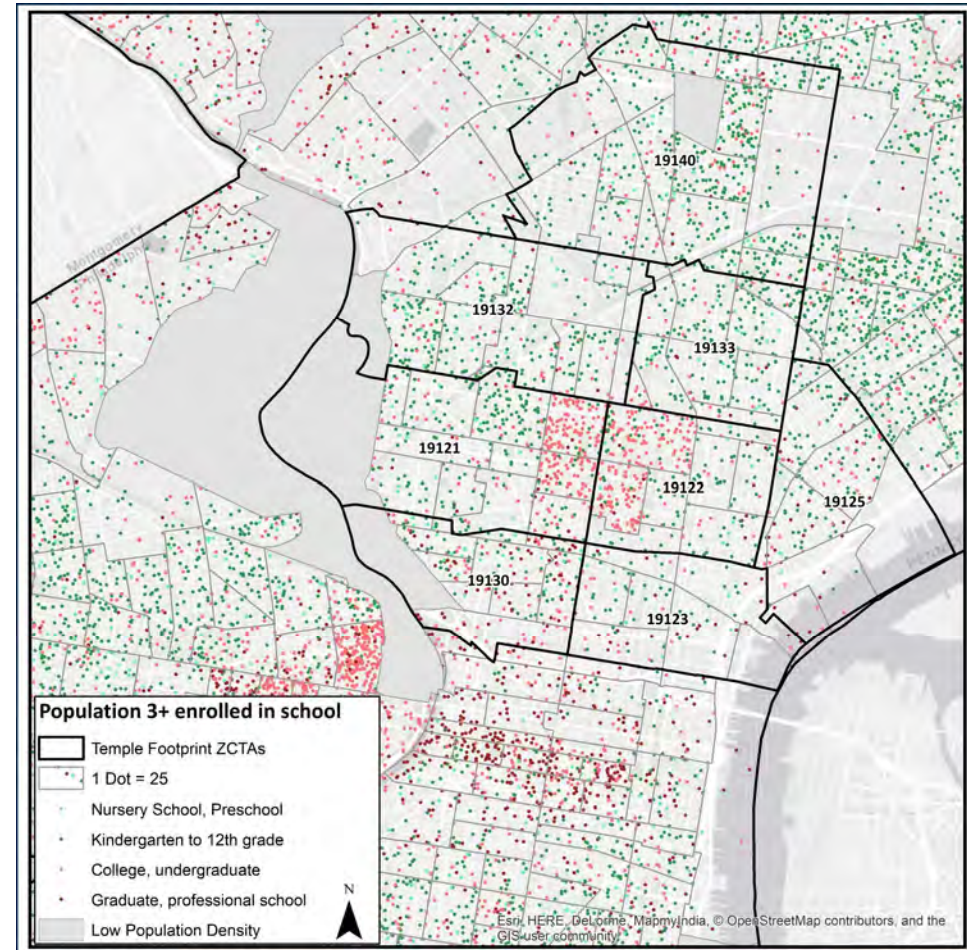
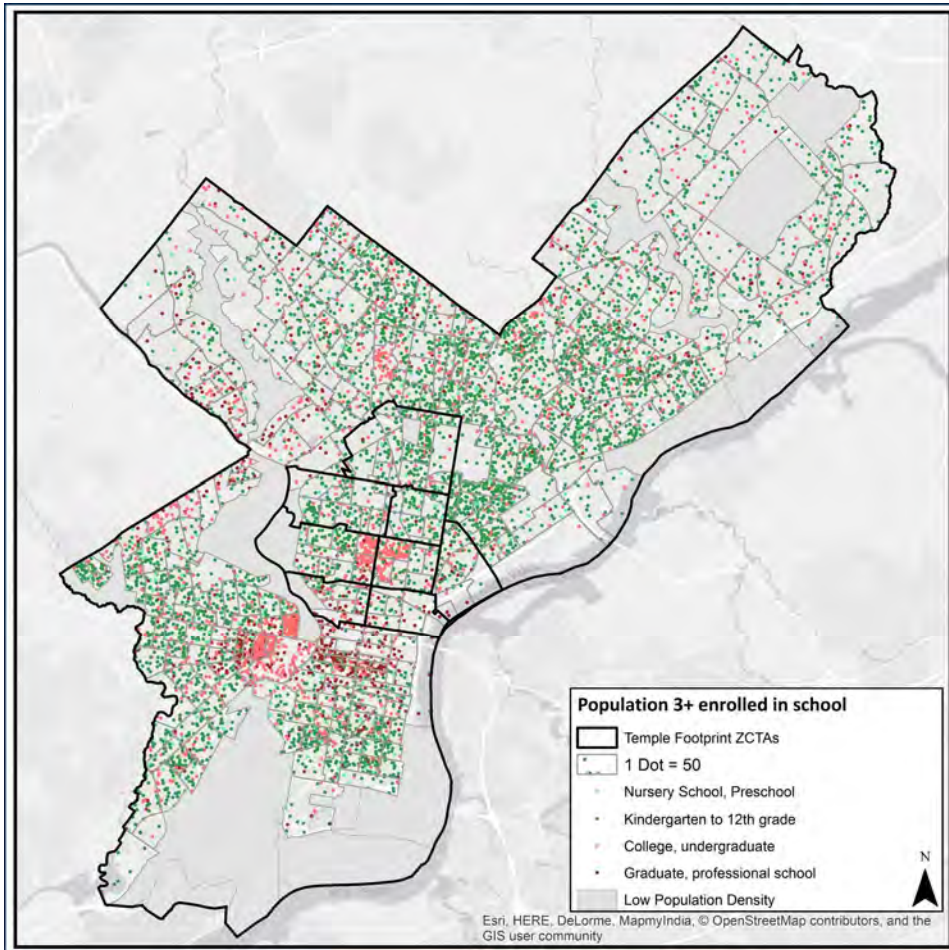
Source: Philadelphia Works analysis of ACS PUMS, 2012-2016

School Enrollment



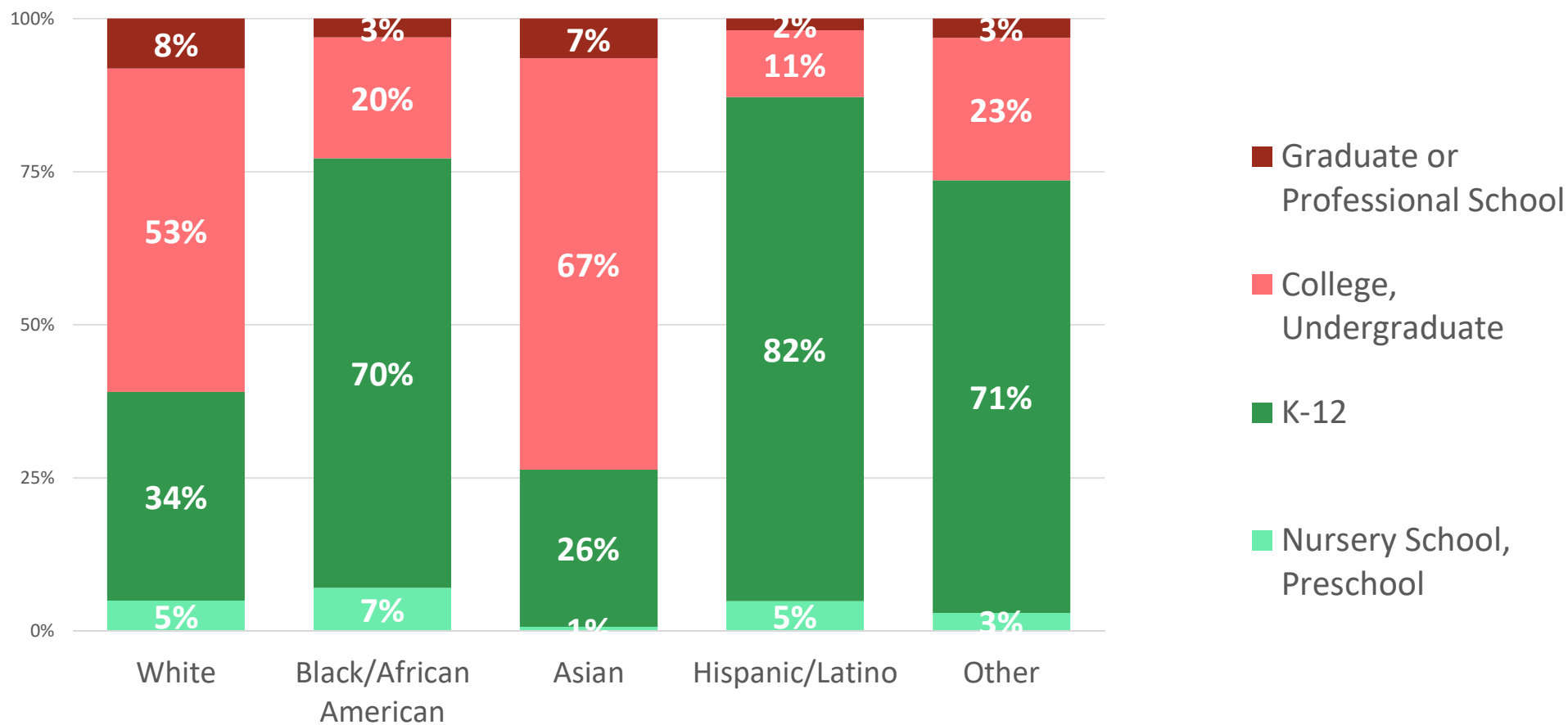
Source: Philadelphia Works analysis of ACS PUMS, 2012-2016

School Enrollment



Source: Philadelphia Works analysis of American Community Survey 5-Year Estimates, 2012-2016

School Enrollment by Race/Ethnicity

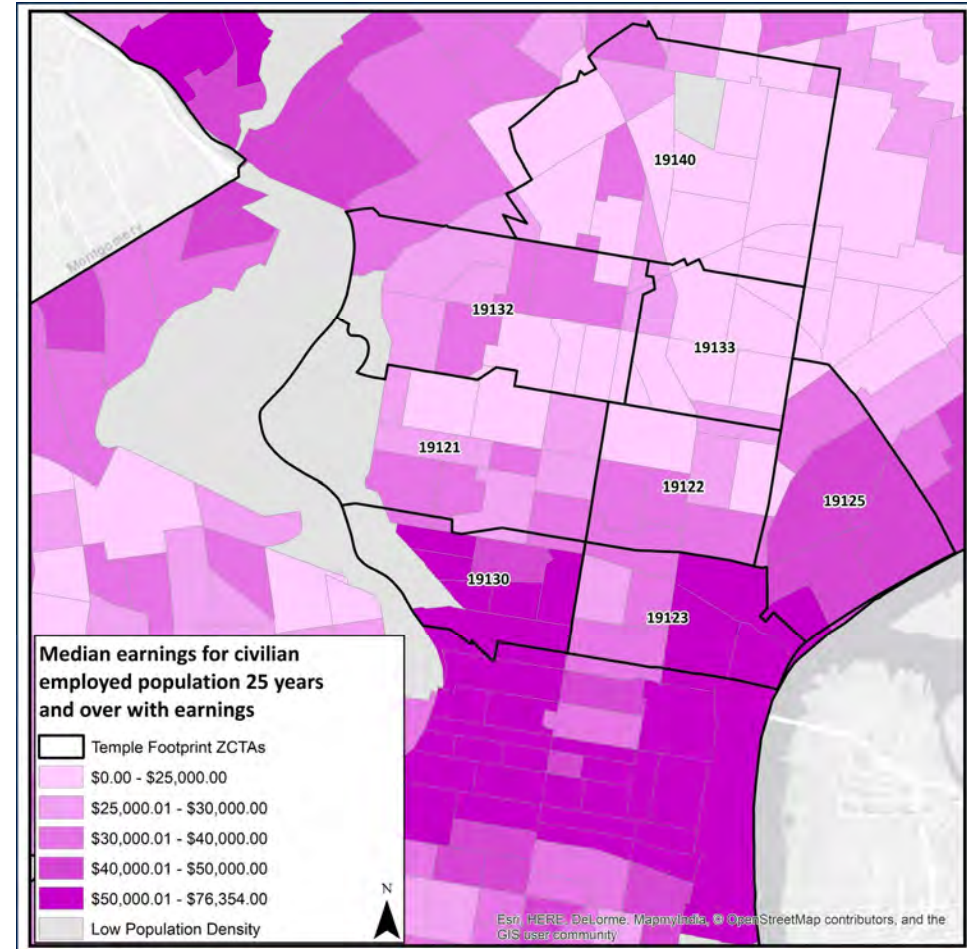
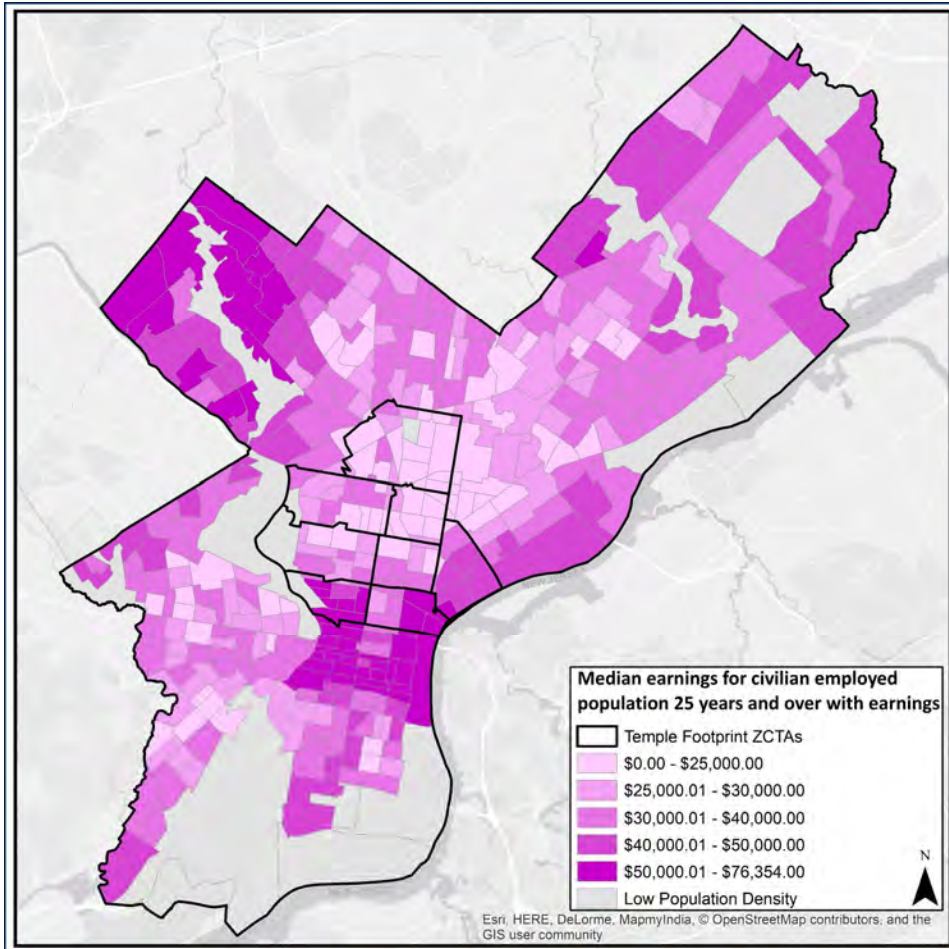


Source: Philadelphia Works analysis of ACS PUMS, 2012-2016

Income and Poverty

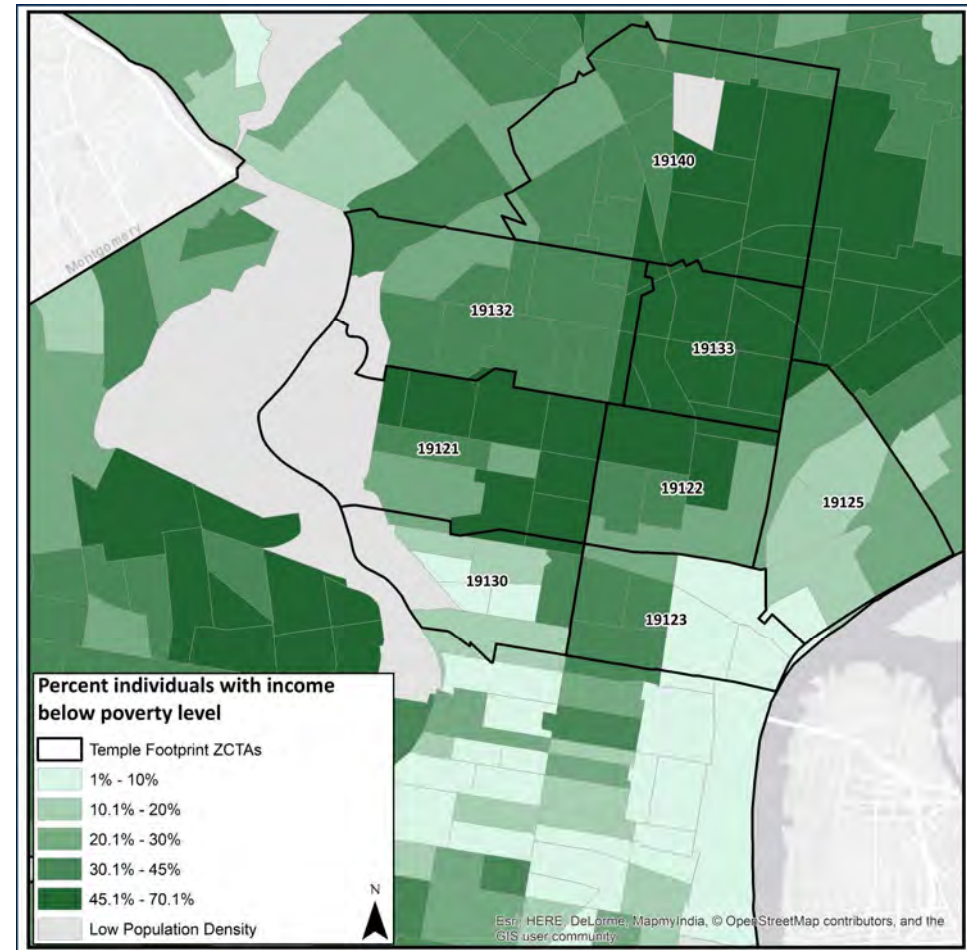
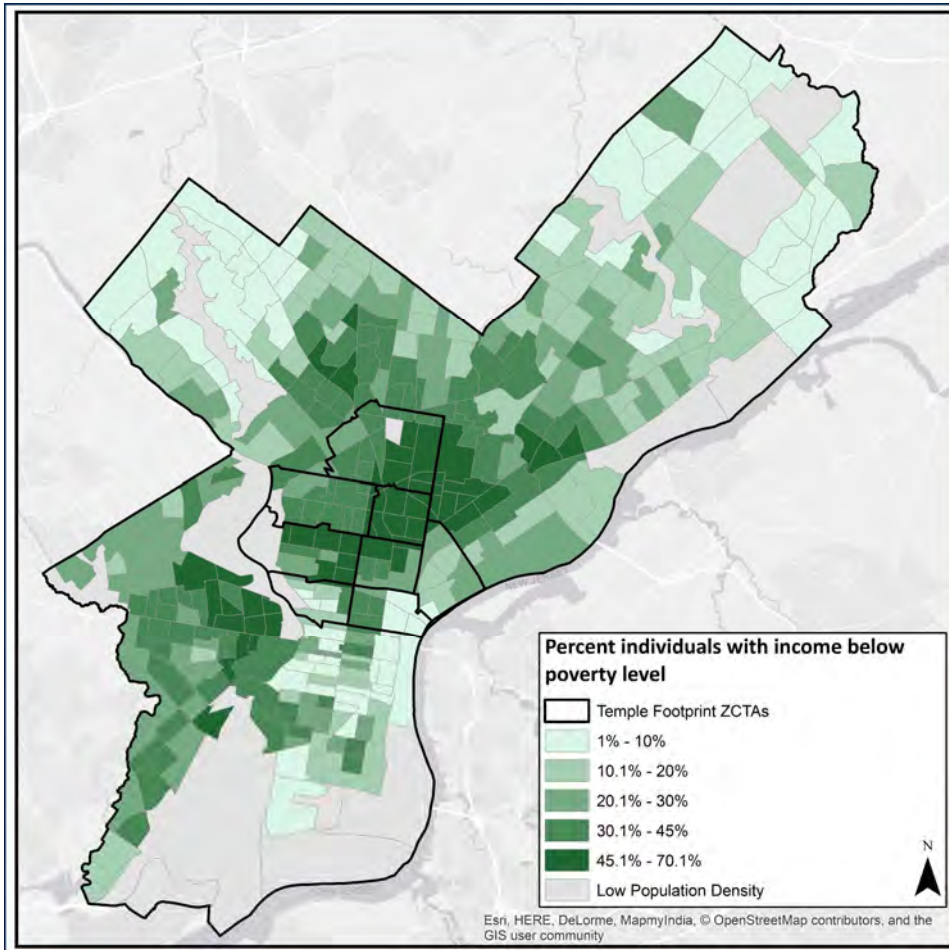
Residents in the Target Area earn a median income of **\$25,000**, with **42%** living in poverty.

Median Earnings



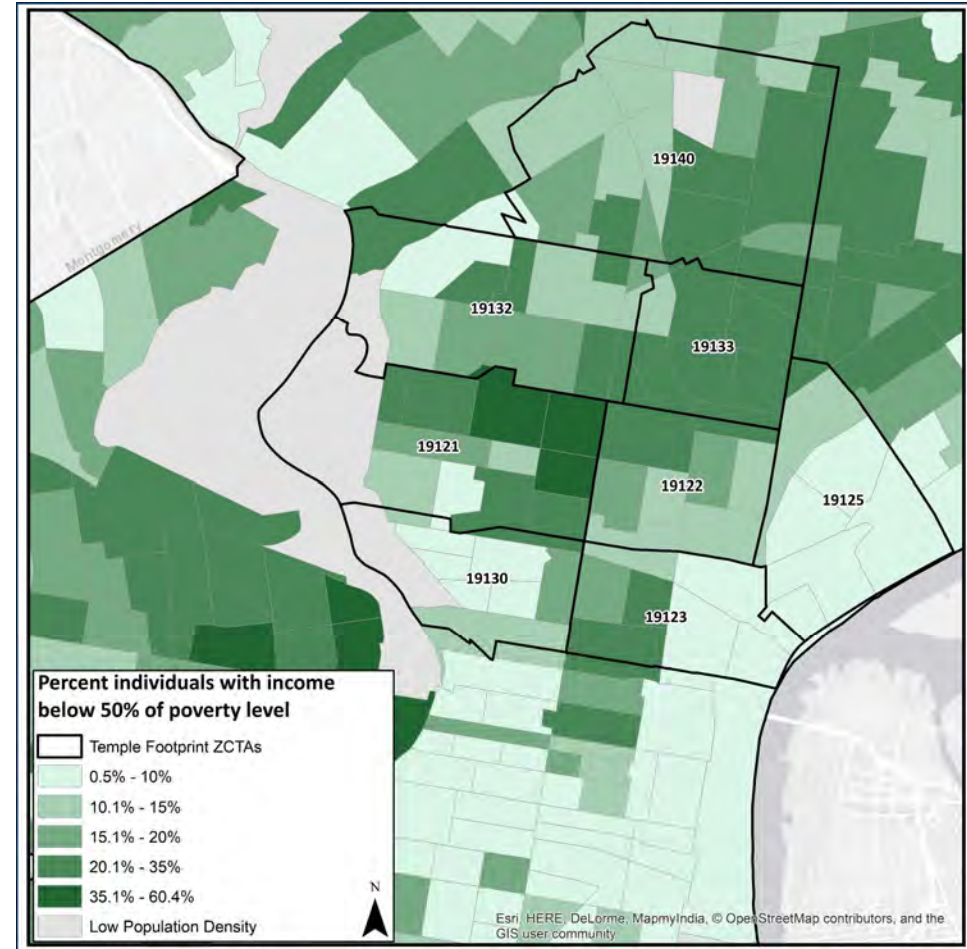
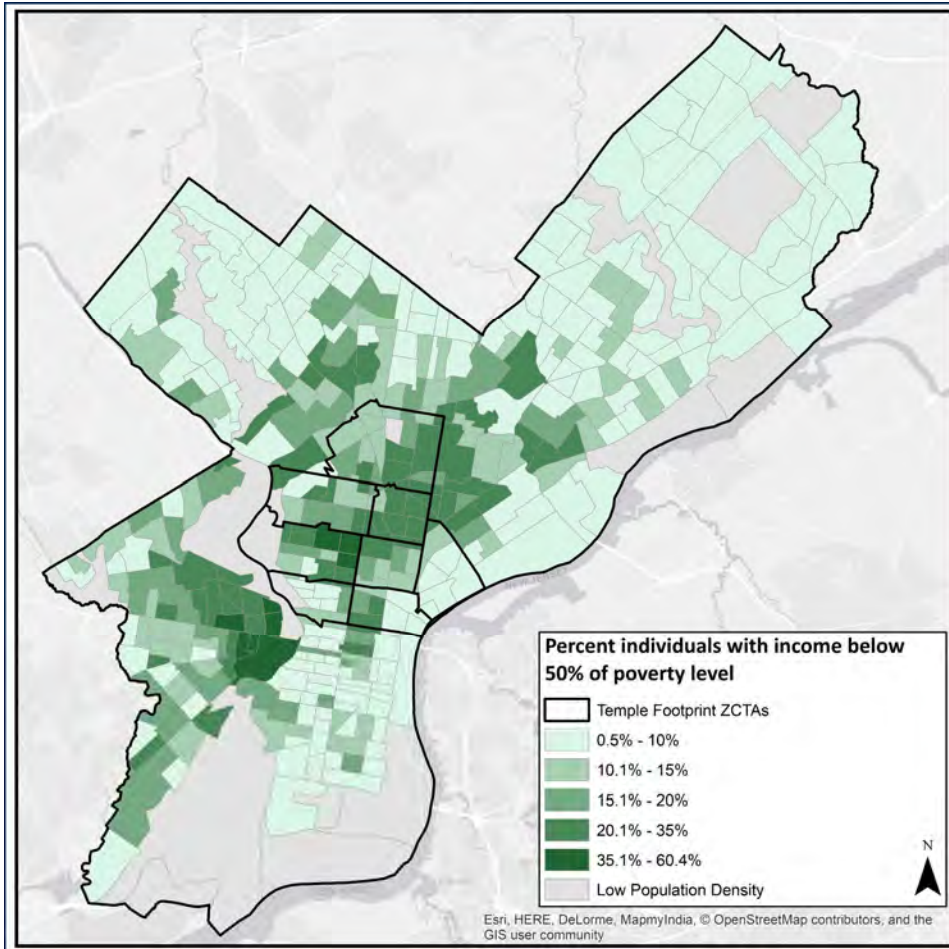
Source: Philadelphia Works analysis of American Community Survey 5-Year Estimates, 2012-2016

Income Below Poverty Level



Source: Philadelphia Works analysis of American Community Survey 5-Year Estimates, 2012-2016

Deep Poverty



Source: Philadelphia Works analysis of American Community Survey 5-Year Estimates, 2012-2016

Employment Status

Skill Level

**Industries and
Employers**

Commuting Patterns

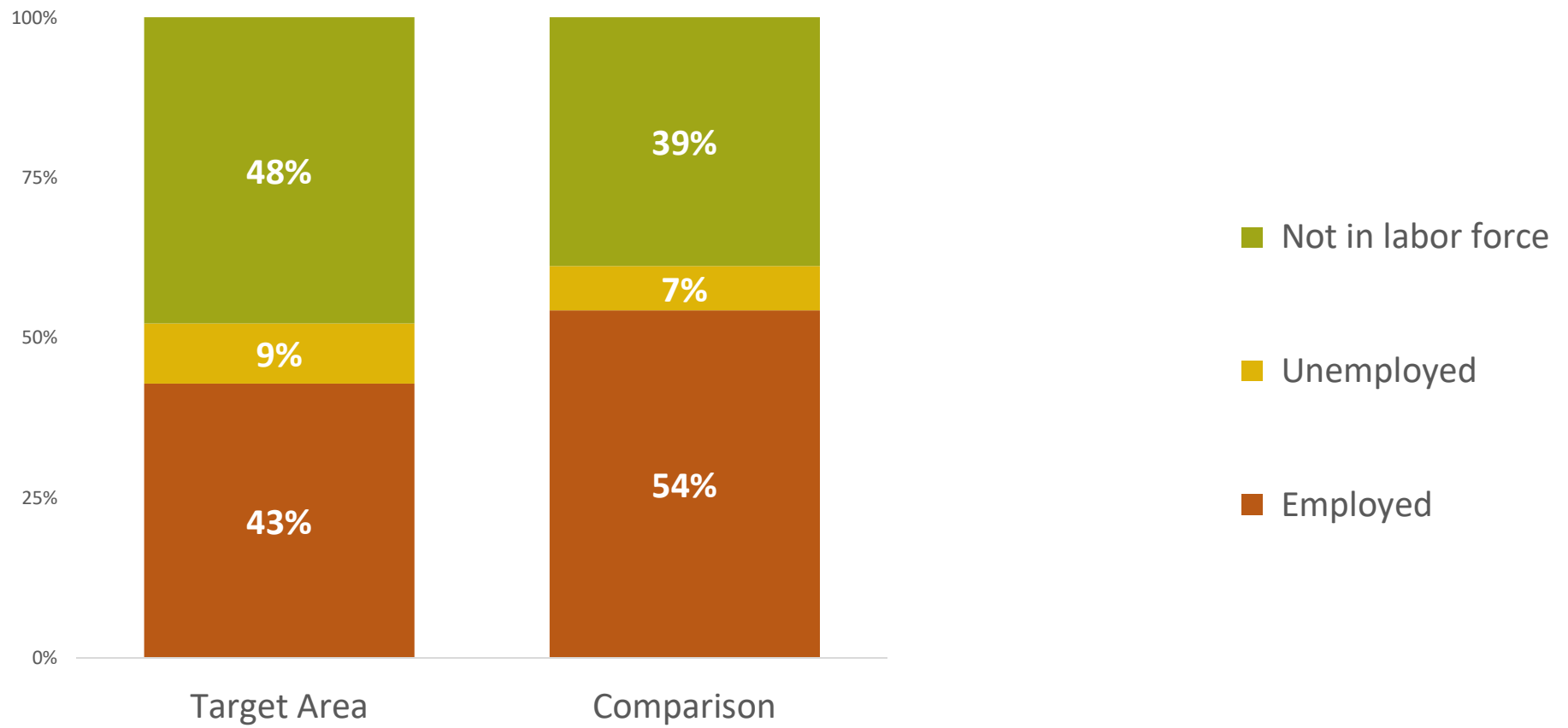
Employment

Employment Status

43% of residents 16 years and older are employed.

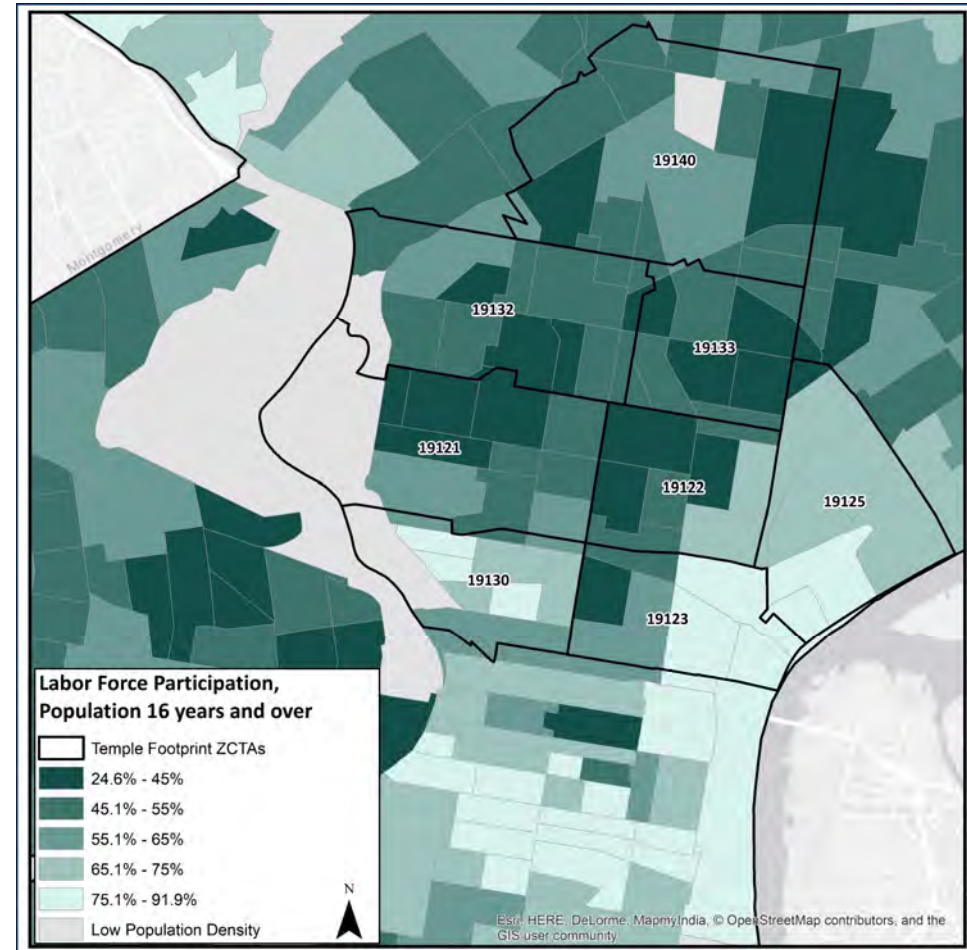
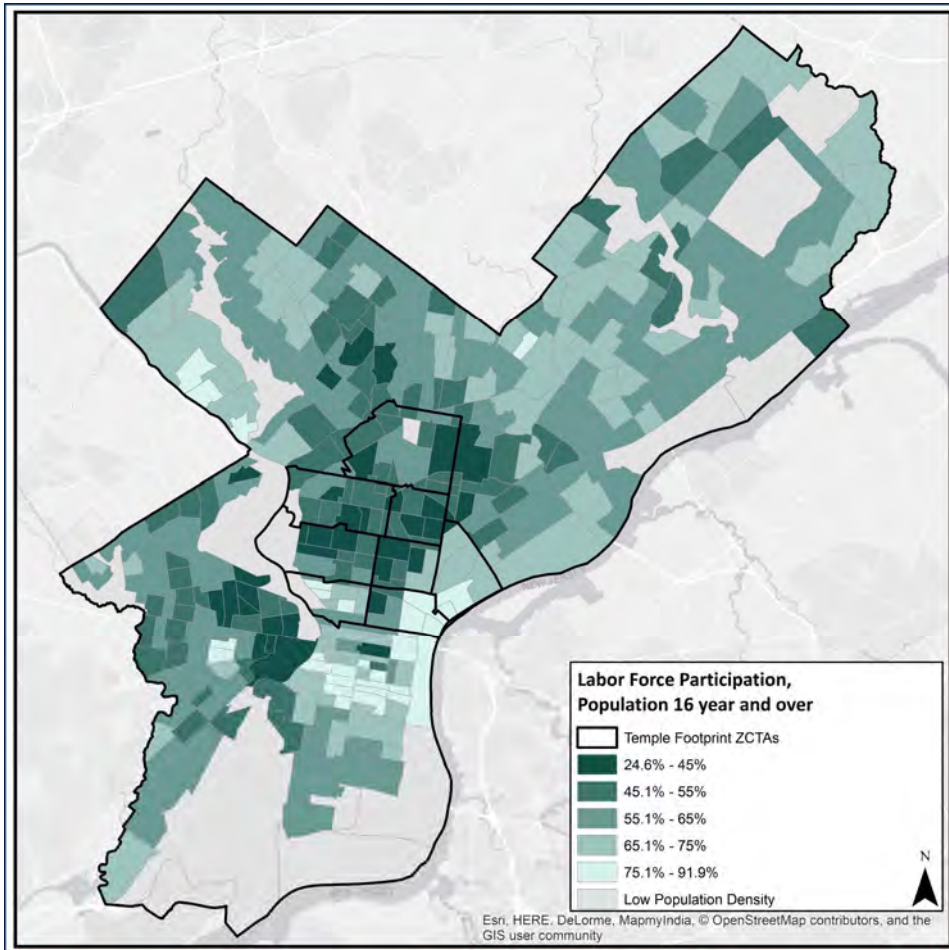
64% of workers 16-64 work full-time, year-round.

Employment Status



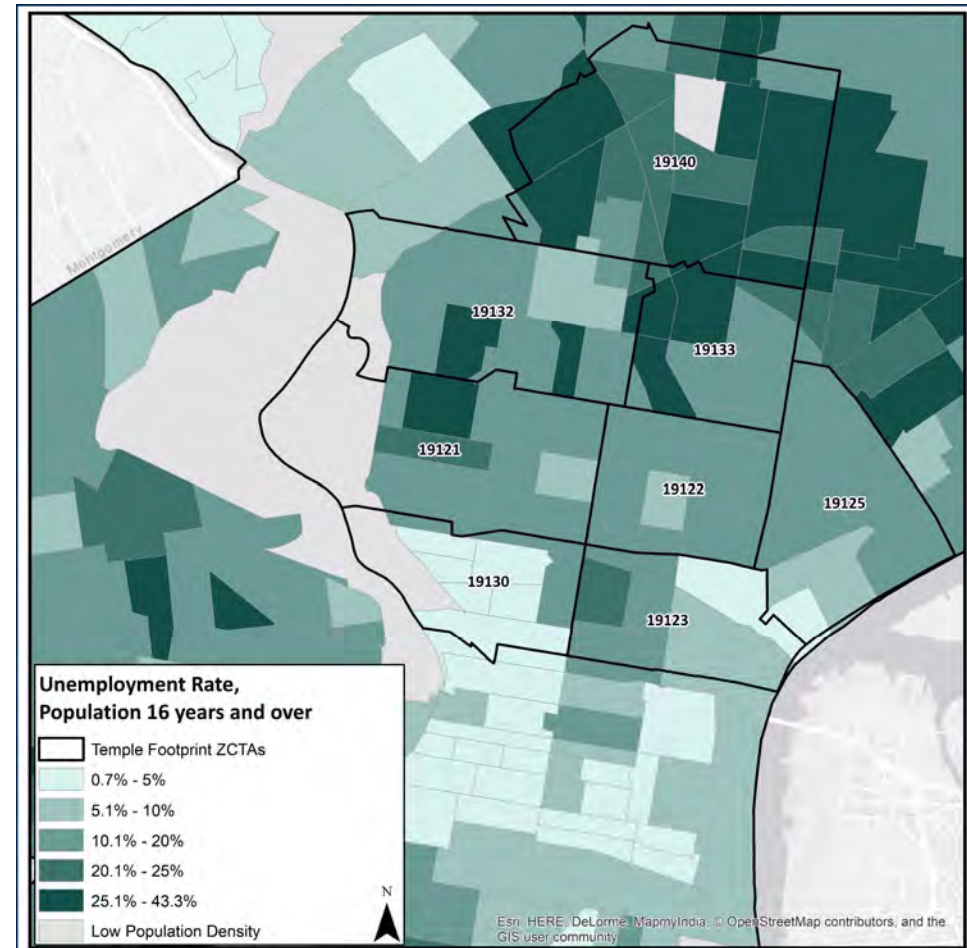
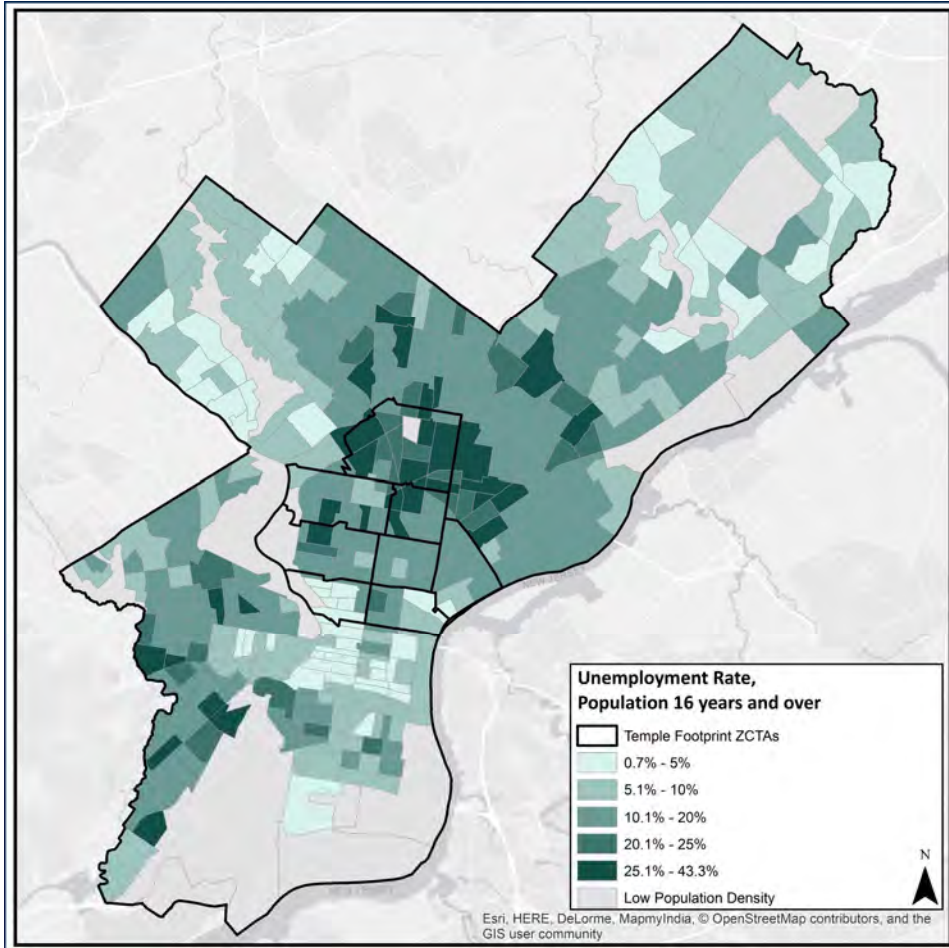
Source: Philadelphia Works analysis of ACS PUMS, 2012-2016

Labor Force Participation



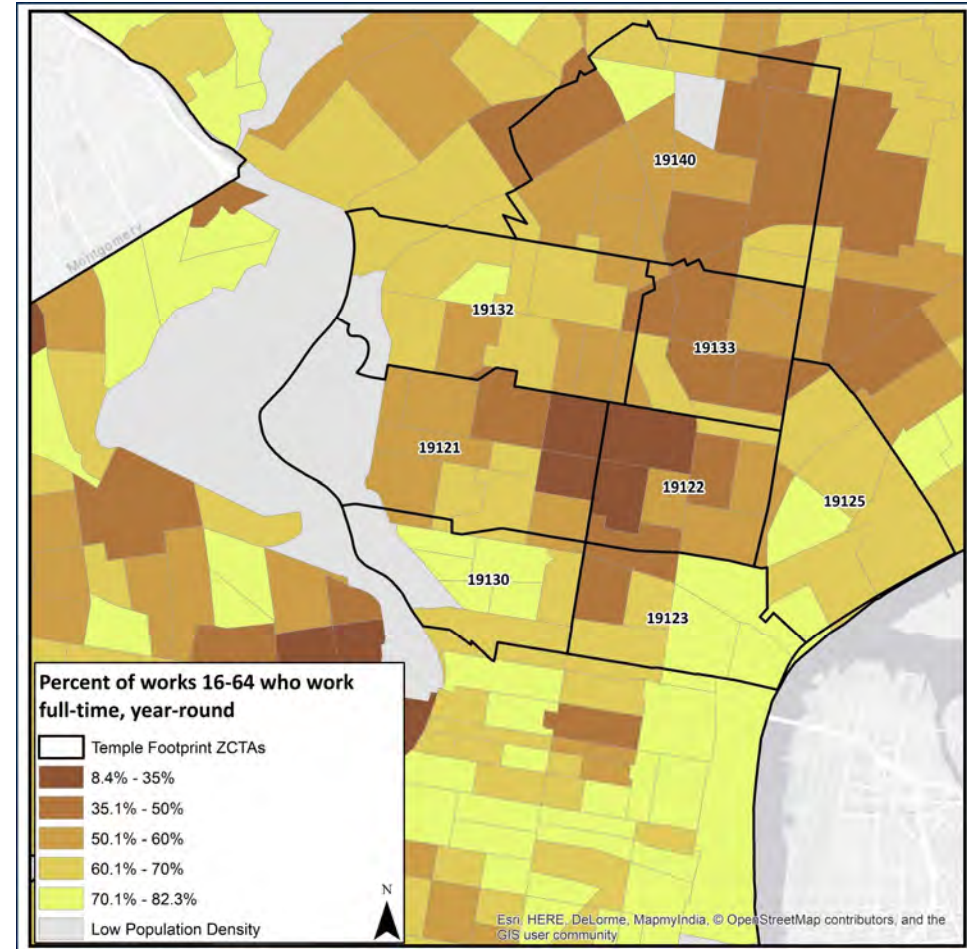
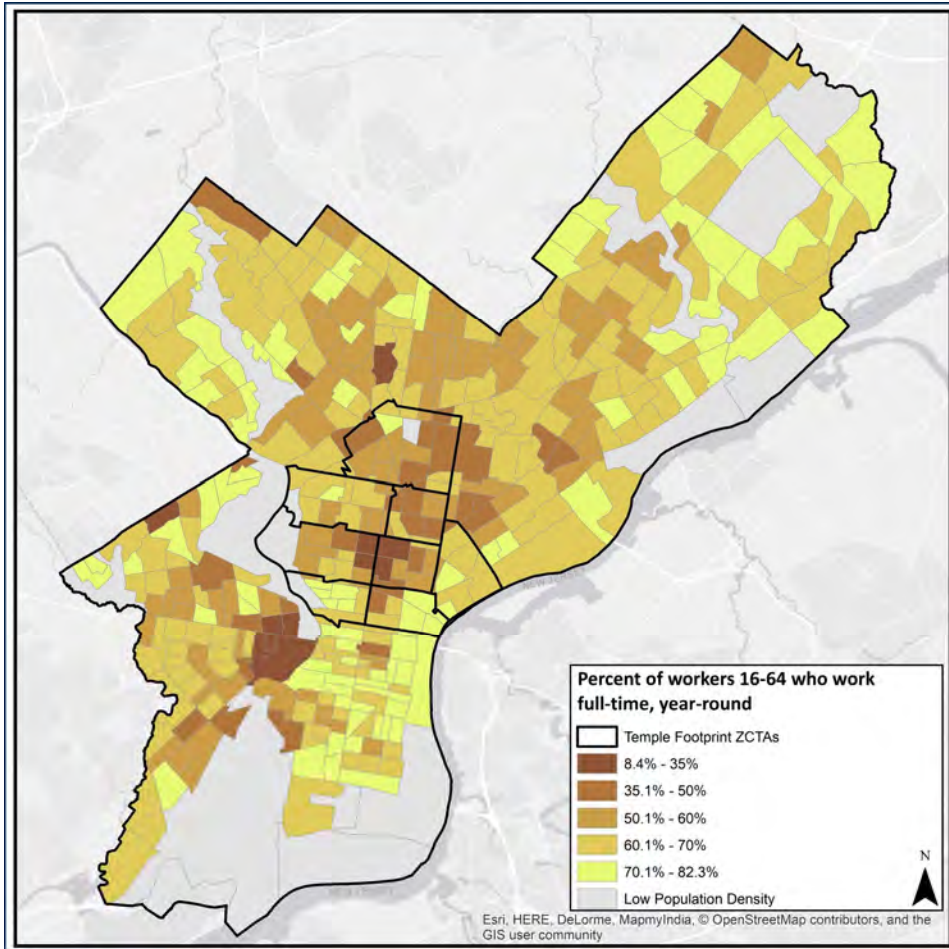
Source: Philadelphia Works analysis of American Community Survey 5-Year Estimates, 2012-2016

Unemployment Rate



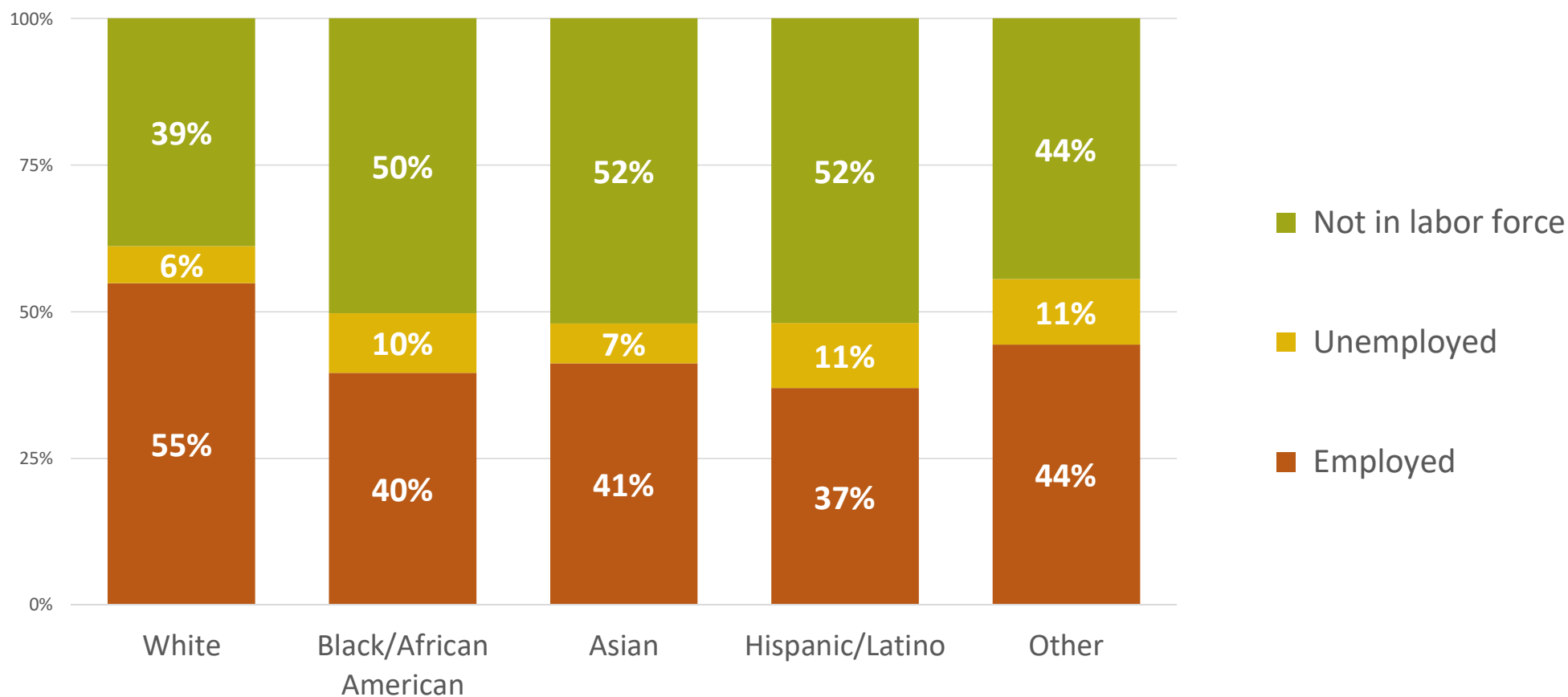
Source: Philadelphia Works analysis of American Community Survey 5-Year Estimates, 2012-2016

Full-time Year-Round Workers



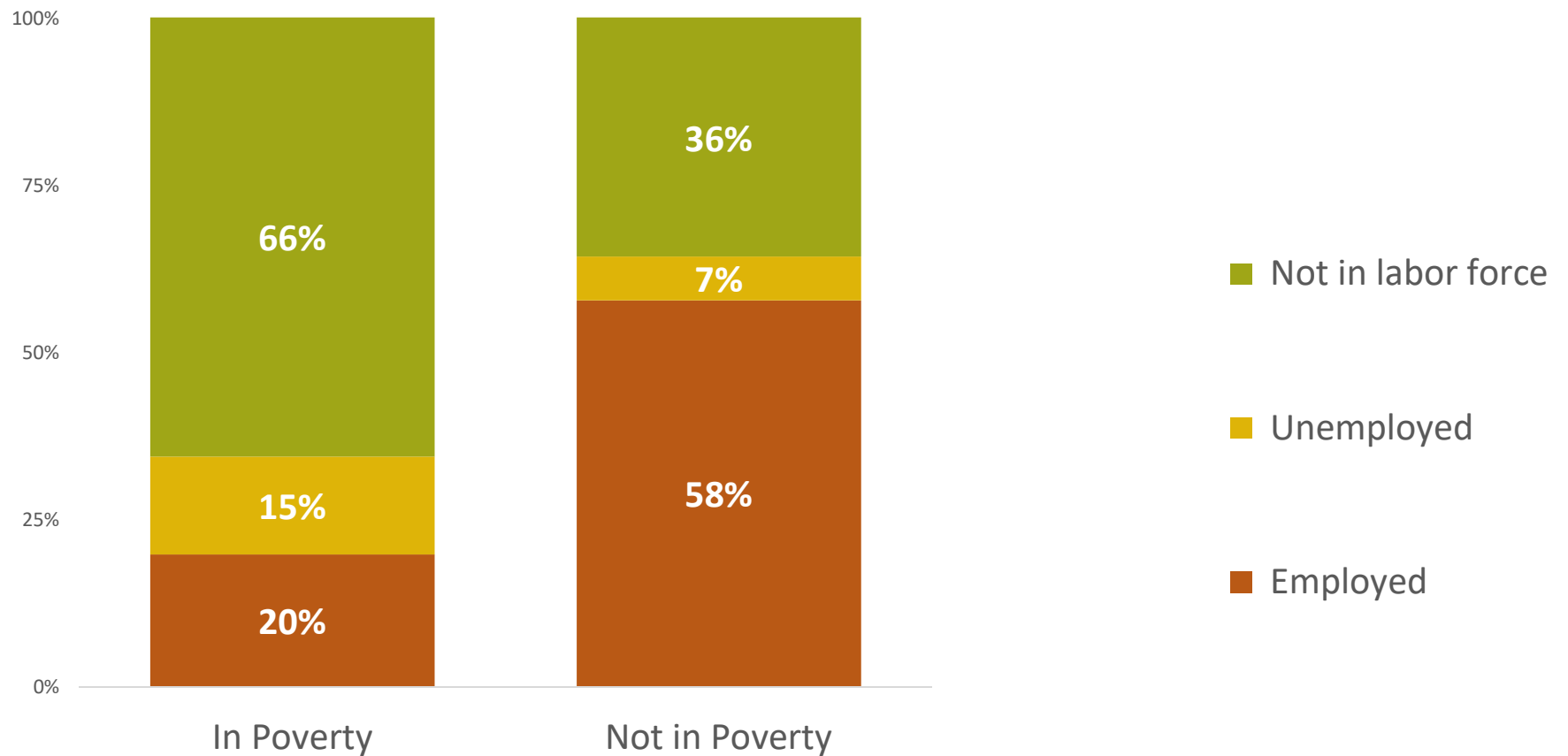
Source: Philadelphia Works analysis of American Community Survey 5-Year Estimates, 2012-2016

Employment Status by Race/Ethnicity



Source: Philadelphia Works analysis of ACS PUMS, 2012-2016

Employment Status by Poverty Status

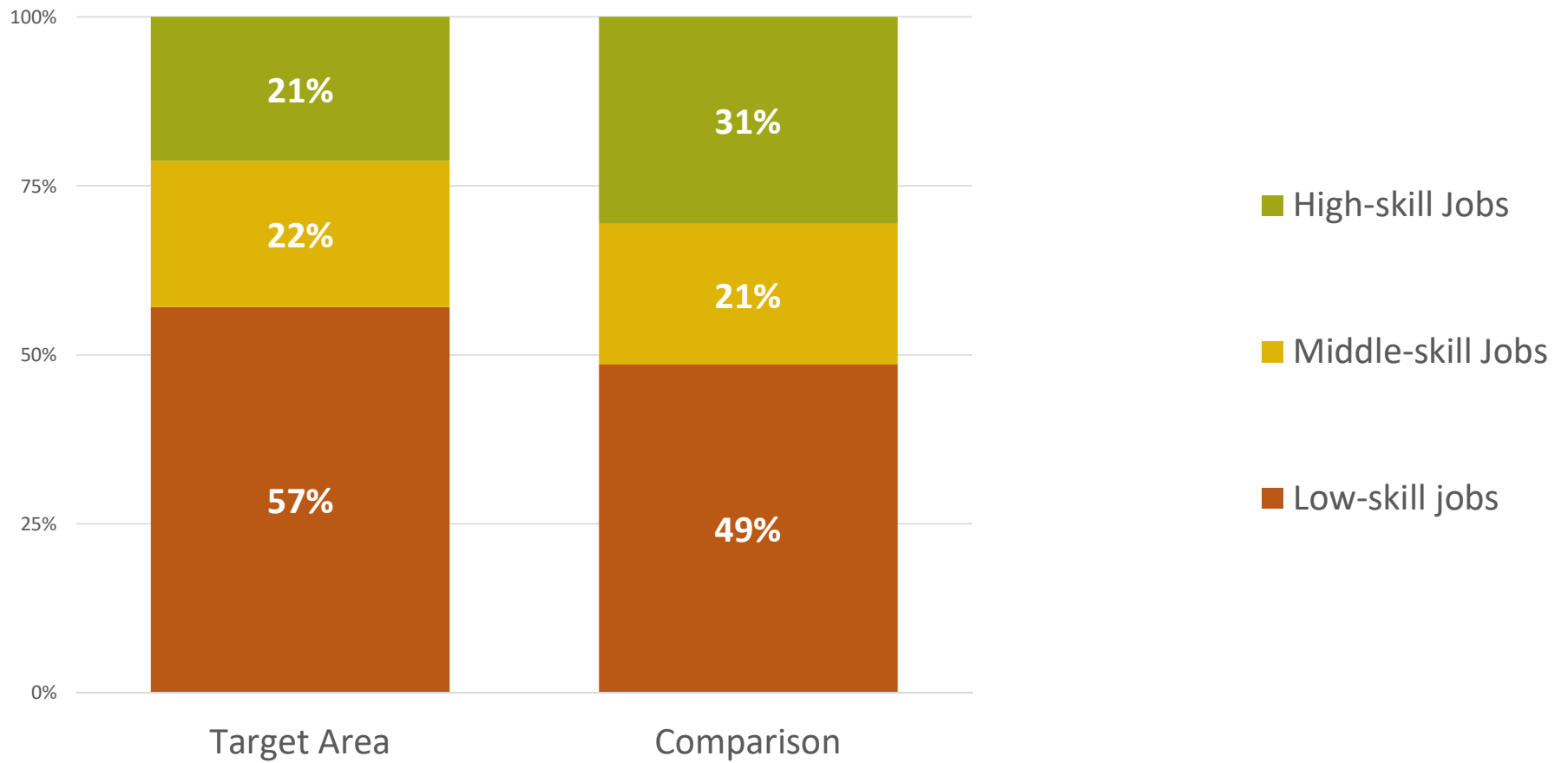


Source: Philadelphia Works analysis of ACS PUMS, 2012-2016

Skill Level

57% of residents are employed
in **low-skill** jobs.

Skill Level

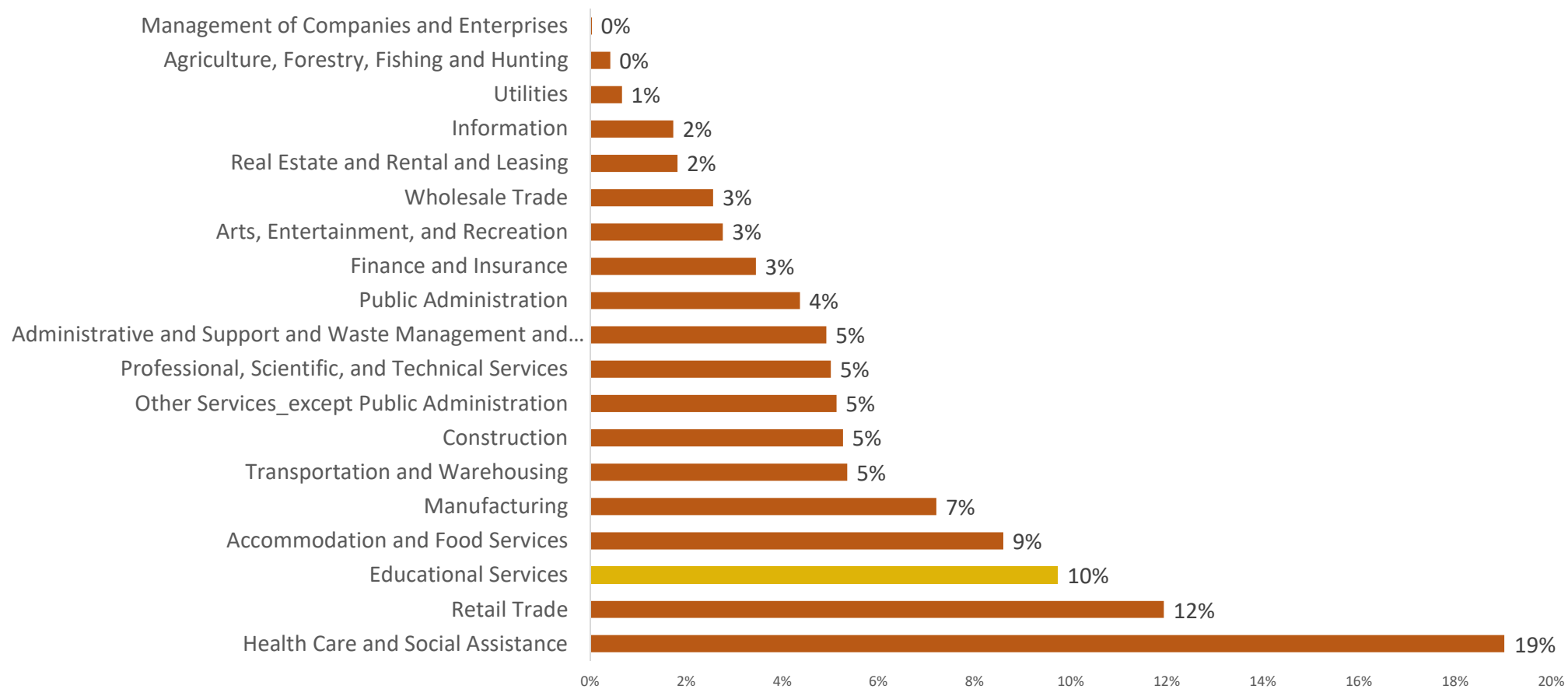


Source: Philadelphia Works analysis of ACS PUMS, 2012-2016

Industries and Employers

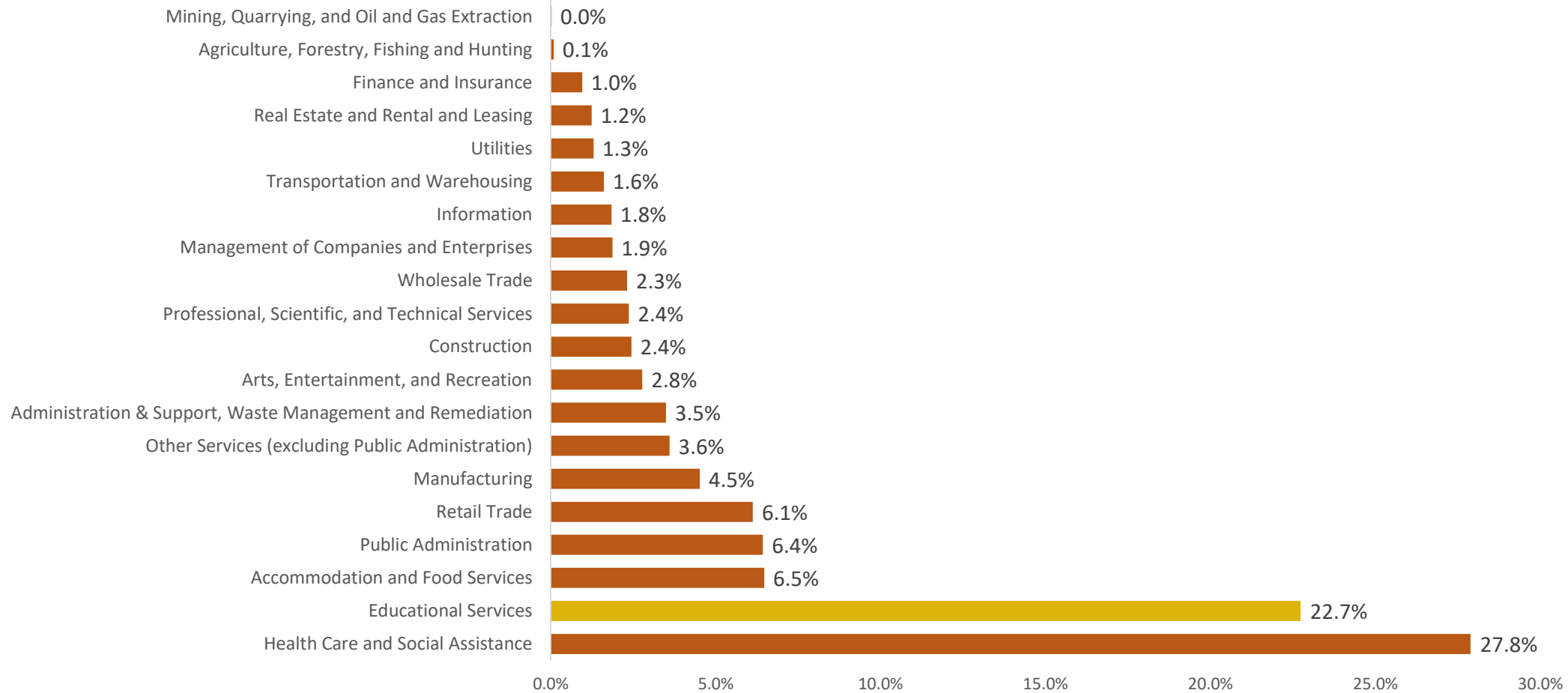
Residents of the LNPWI Area are
not employed in some of
the area's **most dominant**
industries.

Employment by Industry, Residents of LNPWI Area



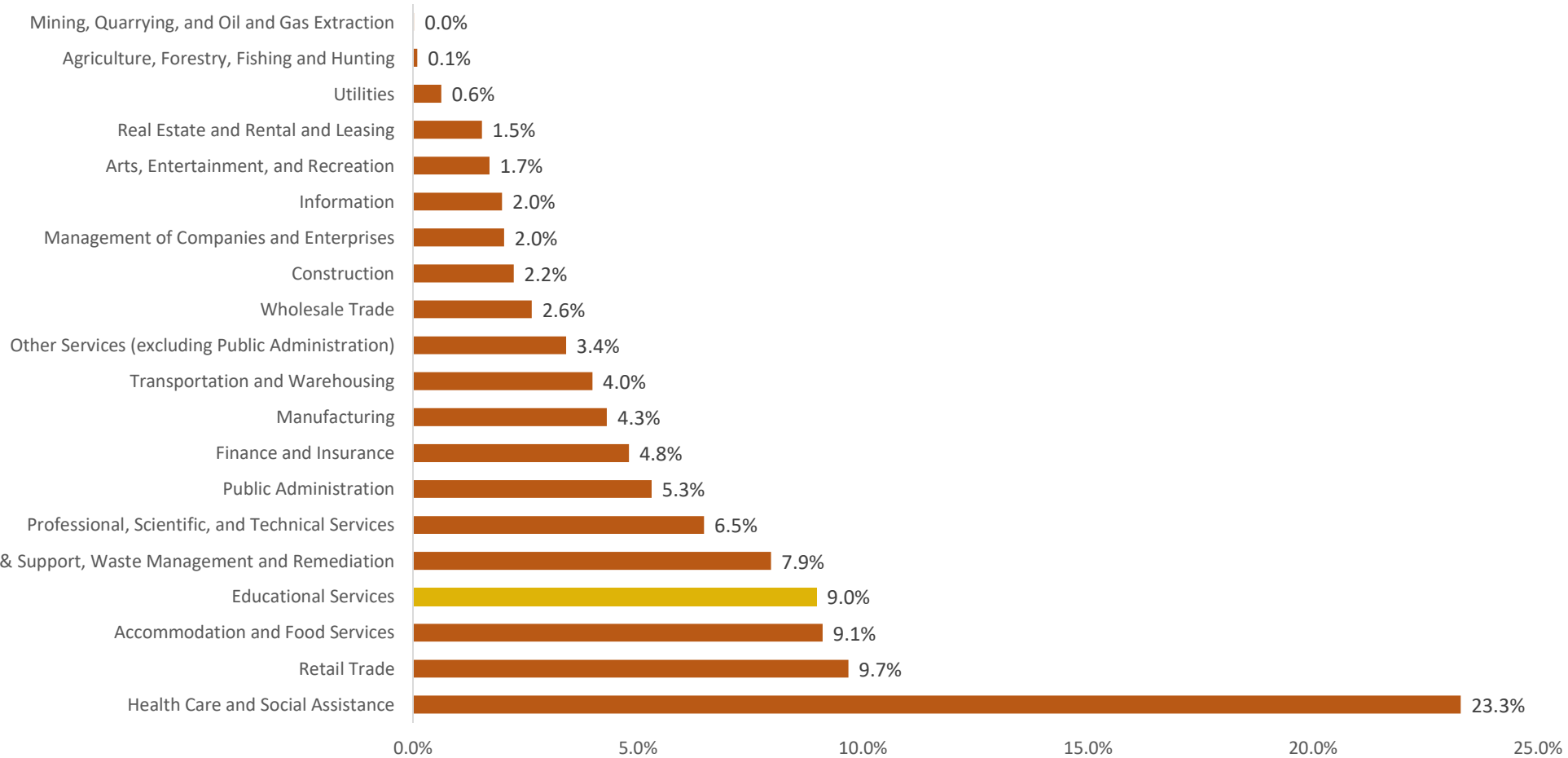
Source: Philadelphia Works analysis of ACS PUMS, 2012-2016

Employment by Industry, Workers of LNPWI Area



Source: Philadelphia Works analysis of LEHD, 2015

Employment in LNPWI Area by Industry for Residents of LNPWI Area

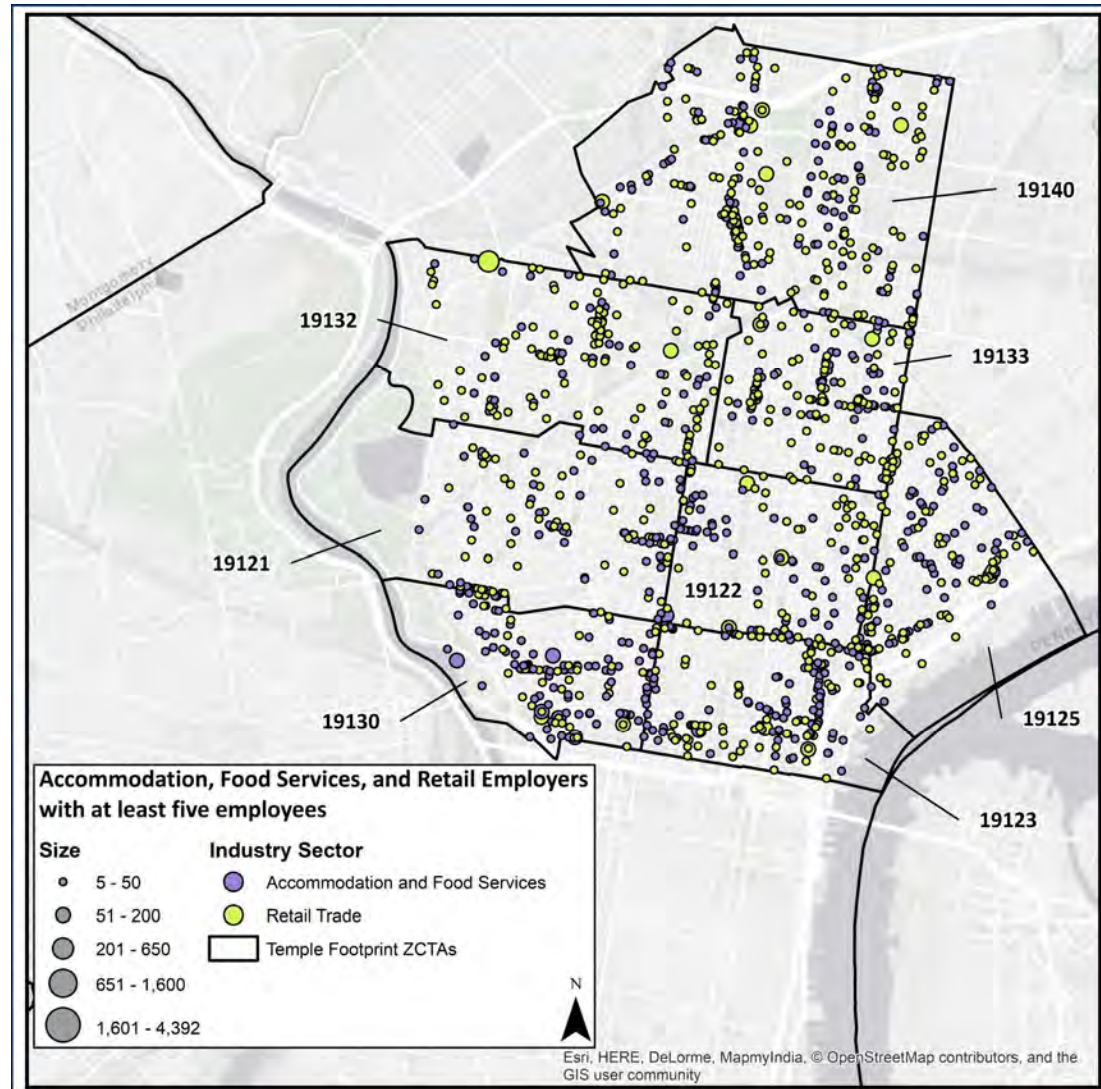


Source: Philadelphia Works analysis of LEHD, 2015

Top 20 Employers in the LNPWI Area

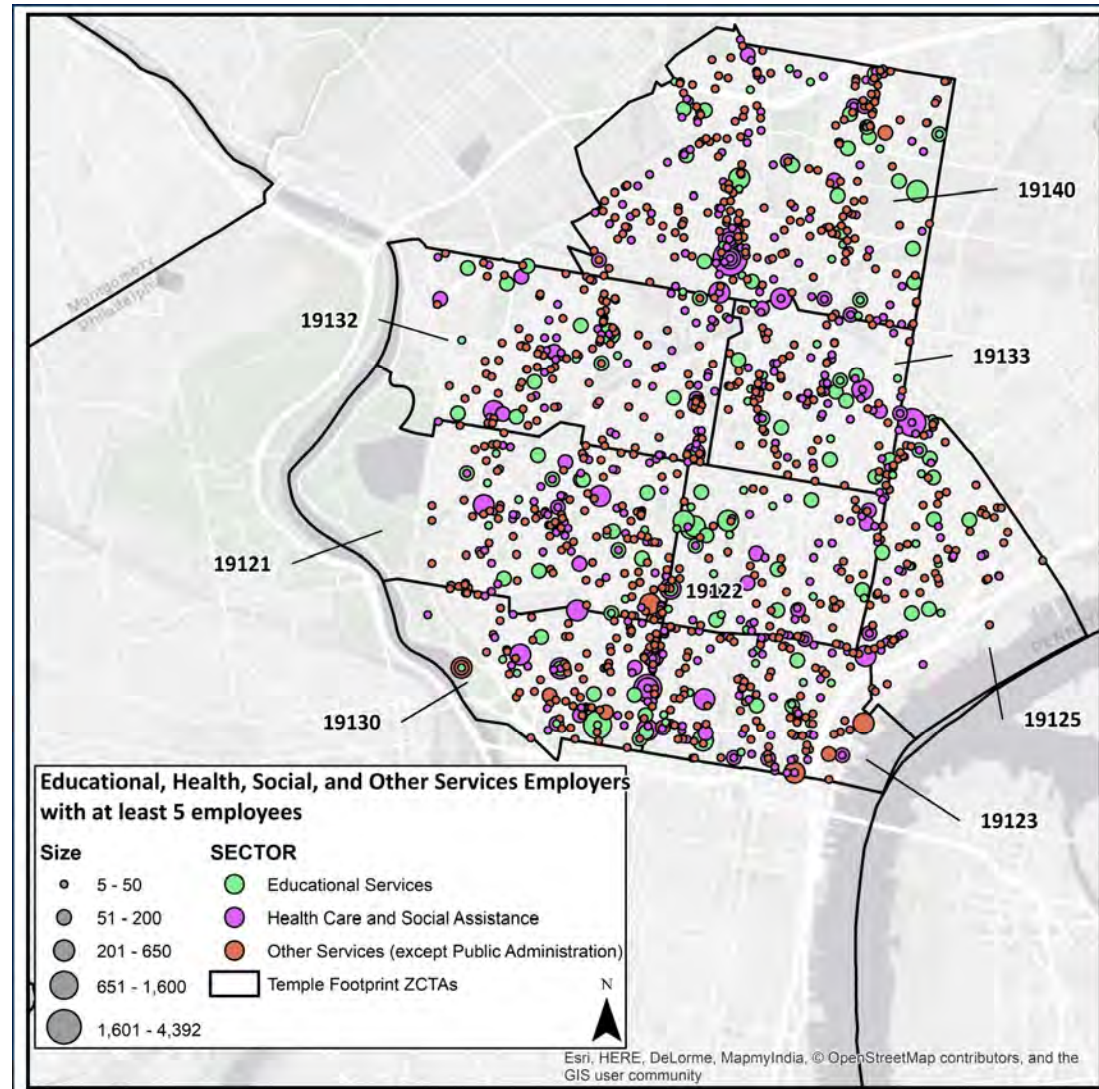
Business Name	Business Size	Industry Name
Temple University Hospital	4,392	General Medical and Surgical Hospitals
Philadelphia Gas Works Co	1,635	Natural Gas Distribution
Day & Zimmermann Groups Inc	1,150	Engineering Services
Sugarhouse Casino	1,000	Other Spectator Sports
Community College Of Philadelphia	1,000	Junior Colleges
Day & Zimmerman International	900	Industrial Supplies Merchant Wholesalers
Major Systems Maintenance Division	872	Plumbing, Heating, and Air-Conditioning Contractors
City Of Philadelphia	834	Water Supply and Irrigation Systems
Area Agency On Aging	709	Home Health Care Services
Temple University Hospital - Episcopal Campus	700	General Medical and Surgical Hospitals
Thomson Reuters Clarivate Analytics	654	Offices of Lawyers
Philadelphia Nursing Home	600	Nursing Care Facilities (Skilled Nursing Facilities)
Penn Fishing	600	Sporting and Athletic Goods Manufacturing
Liacouras Center	600	Agents and Managers for Artists, Athletes, Entertainers, and Other Public Figures
Pep Boys	548	Automotive Parts and Accessories Stores
Philadelphia Corporation For Aging	547	Other Individual and Family Services
Fairmount Long Term Care	540	Office Administrative Services
Philadelphia Daily News	500	Newspaper Publishers
Marscare	495	Home Health Care Services
Scotlandyard Security Services Ltd	490	Security Guards and Patrol Services
<i>Source: DatabaseUSA 2018Q1</i>		

Accommodation, Food Services, and Retail Employers



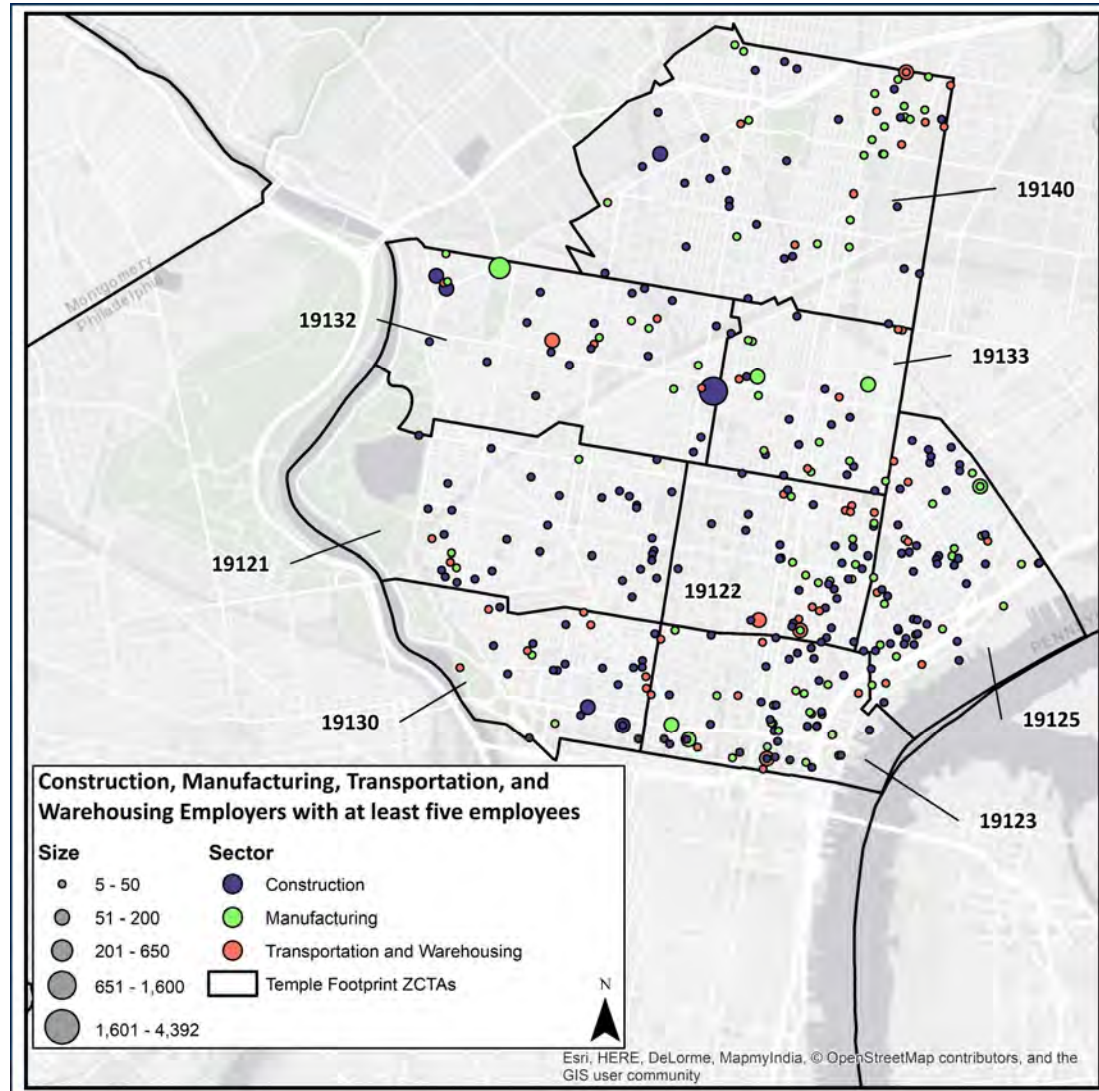
Source: Philadelphia Works analysis of DatabaseUSA 2018Q1

Educational Services, Health Care, Social Assistance, and Other Services Employers



Source: Philadelphia Works analysis of DatabaseUSA 2018Q1

Construction, Manufacturing, Transportation, and Warehousing Employers

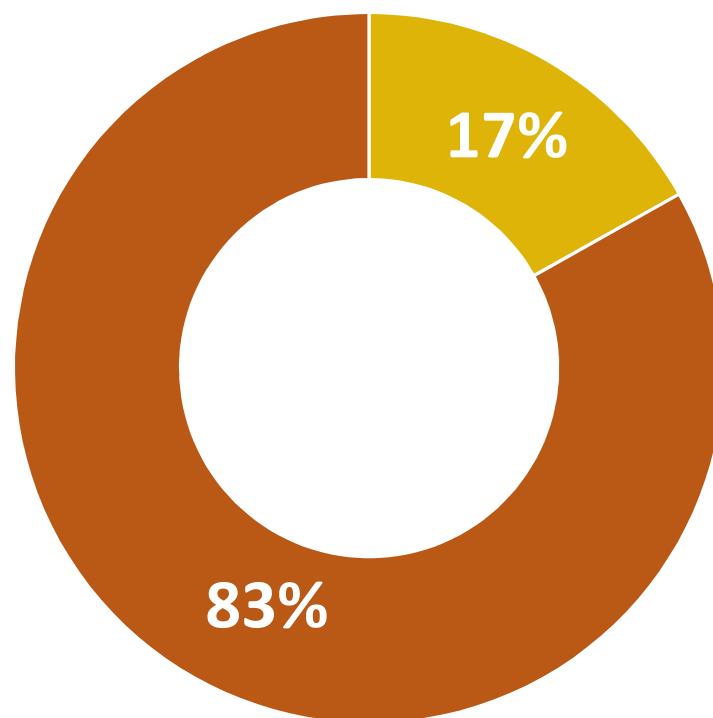


Source: Philadelphia Works analysis of DatabaseUSA 2018Q1

Commuting Patterns

17% of the people who work in the LNPWI Area are also residents of it.

Place of Residence for Workers in the LNPWI Area

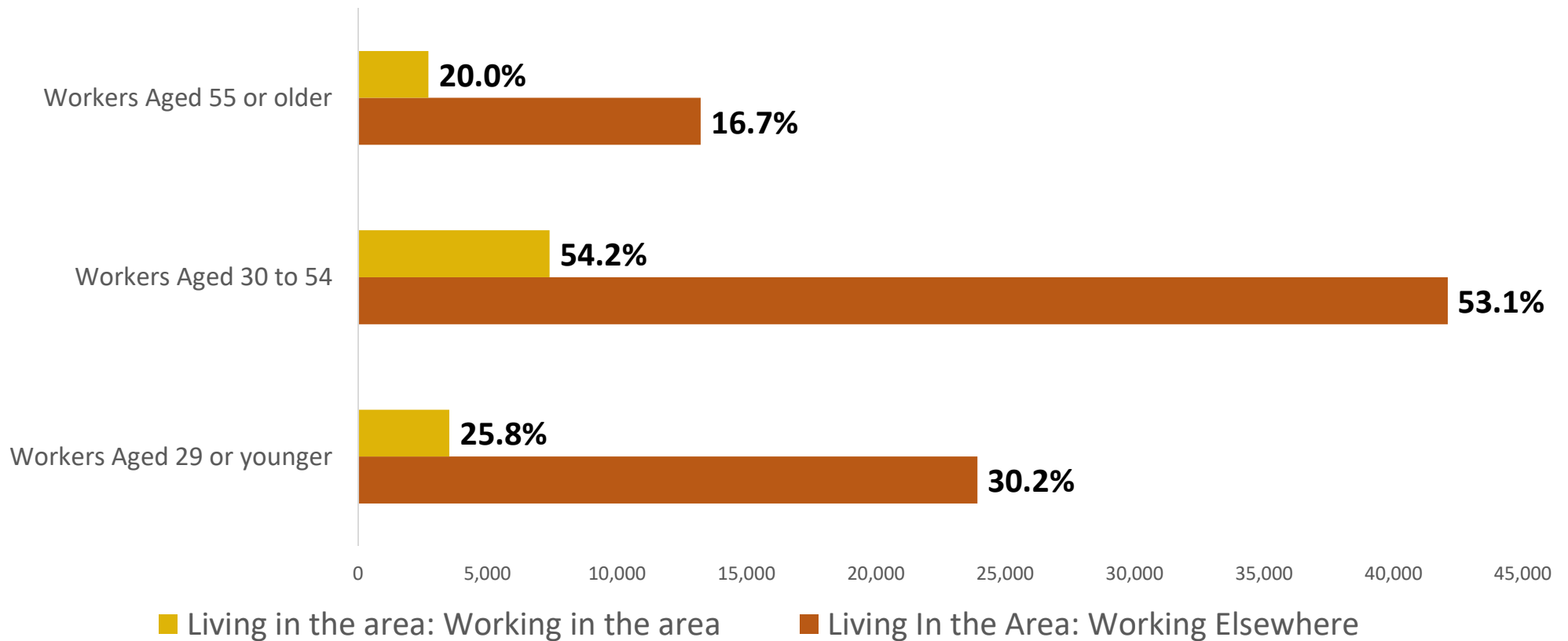


■ Employed and Living in the Area

■ Employed in the Area but Living Outside

Source: Philadelphia Works analysis of LEHD, 2015

Place of Employment for Residents by Age Group



Source: Philadelphia Works analysis of LEHD, 2015

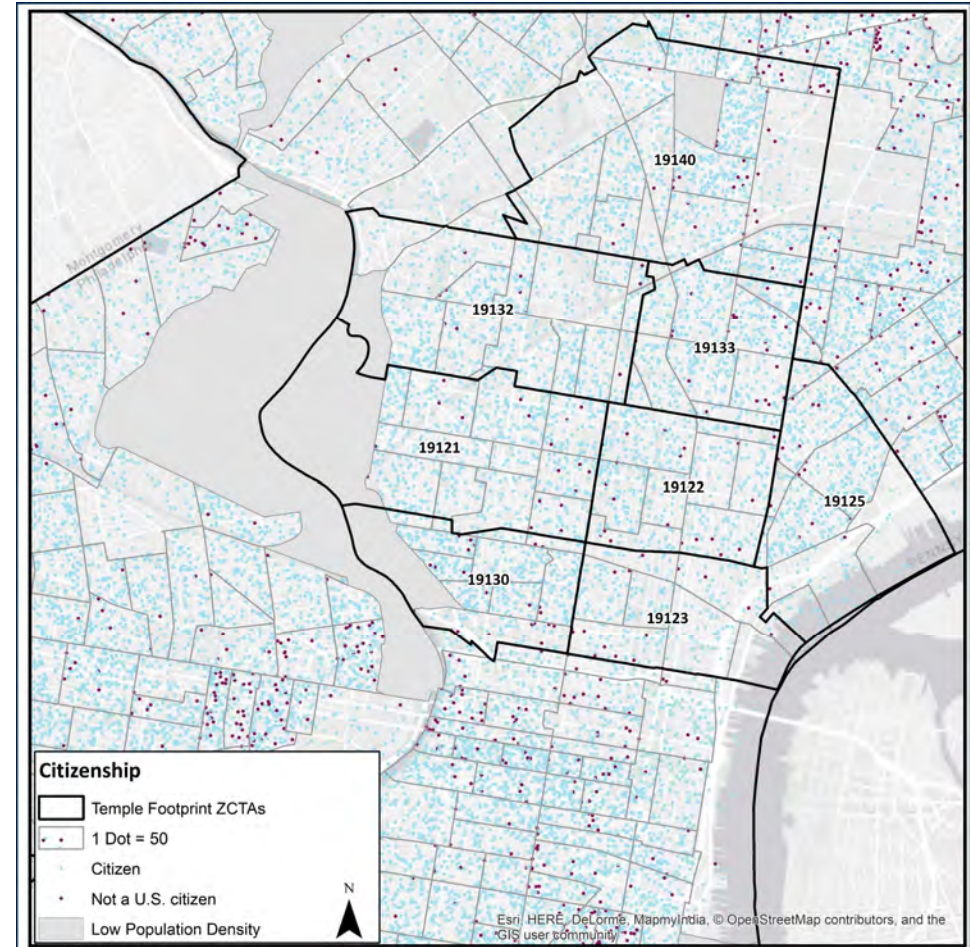
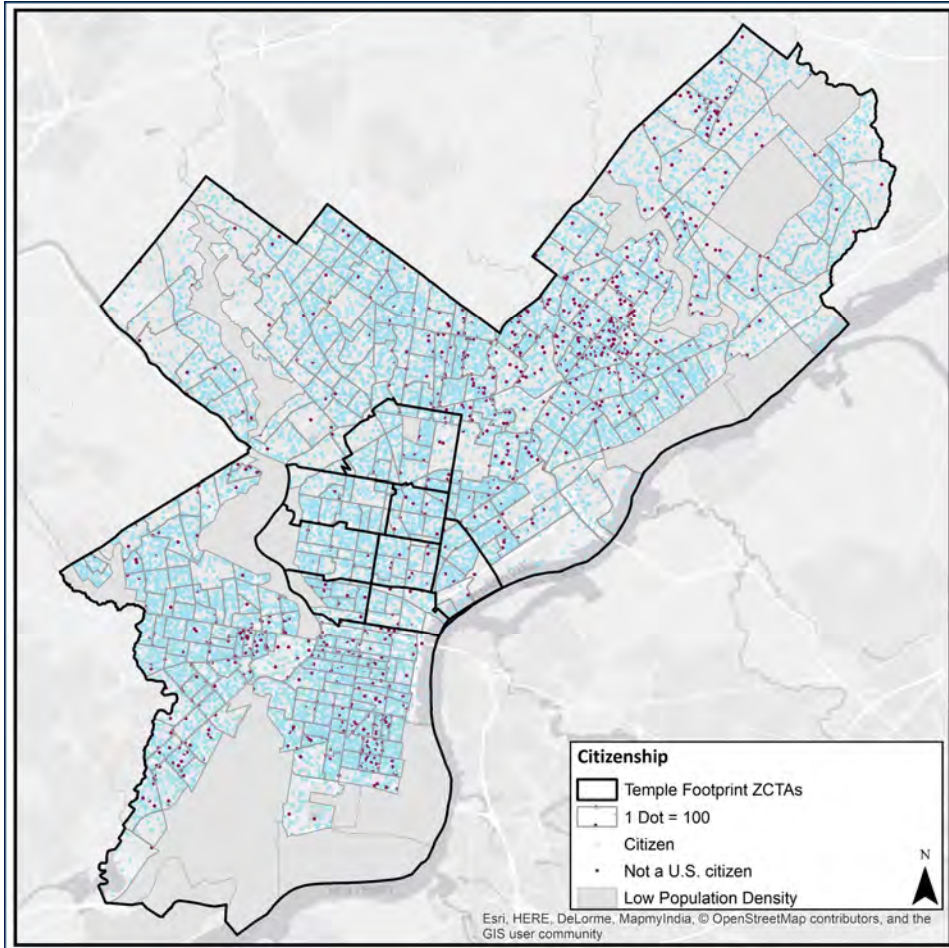
Citizenship
ESL Populations
People with a Disability
Benefit Recipients
Returning Citizens
Veterans
Opportunity Youth

Priority Populations

Citizenship

7% of the residents of the LNPWI
Area are **immigrants**.

Citizenship

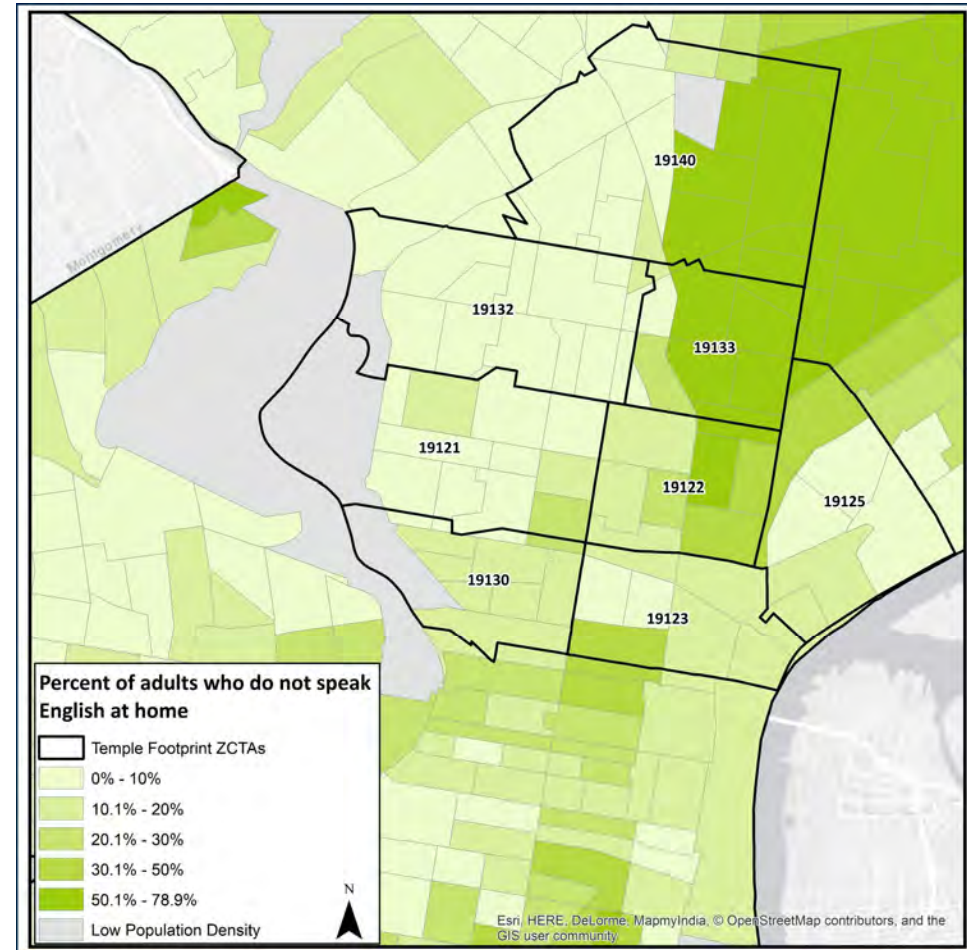
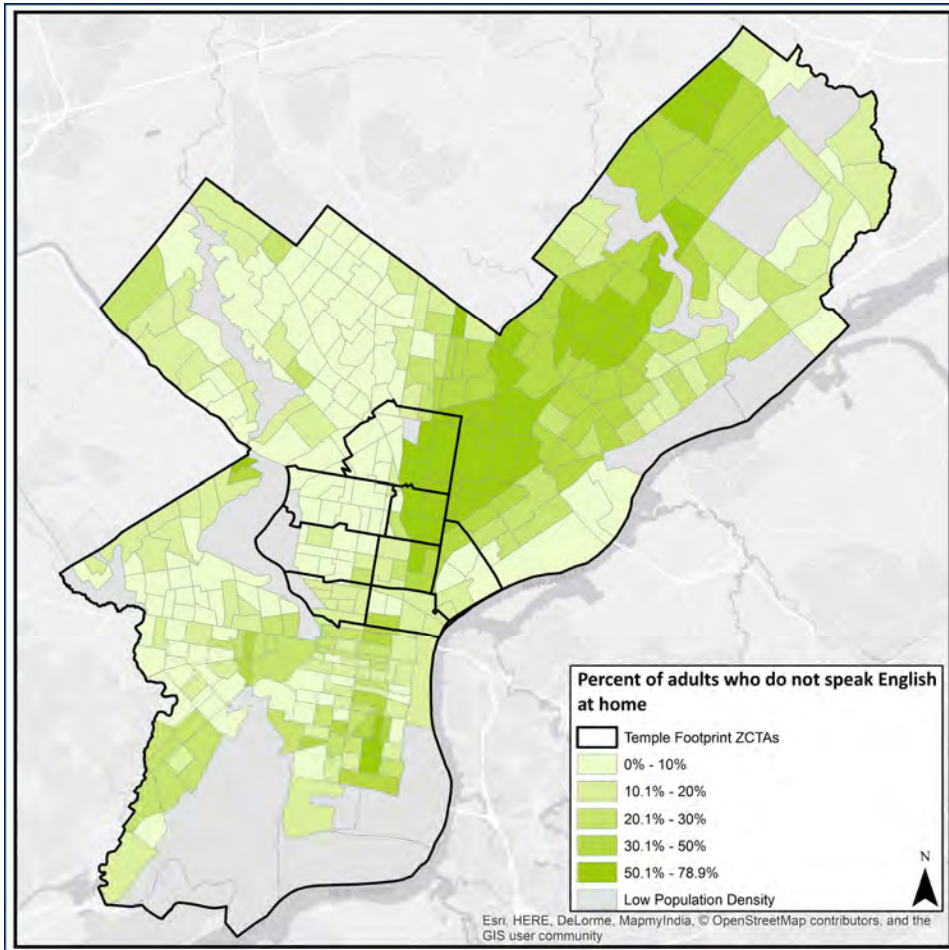


Source: Philadelphia Works analysis of American Community Survey 5-Year Estimates, 2012-2016

English Proficiency

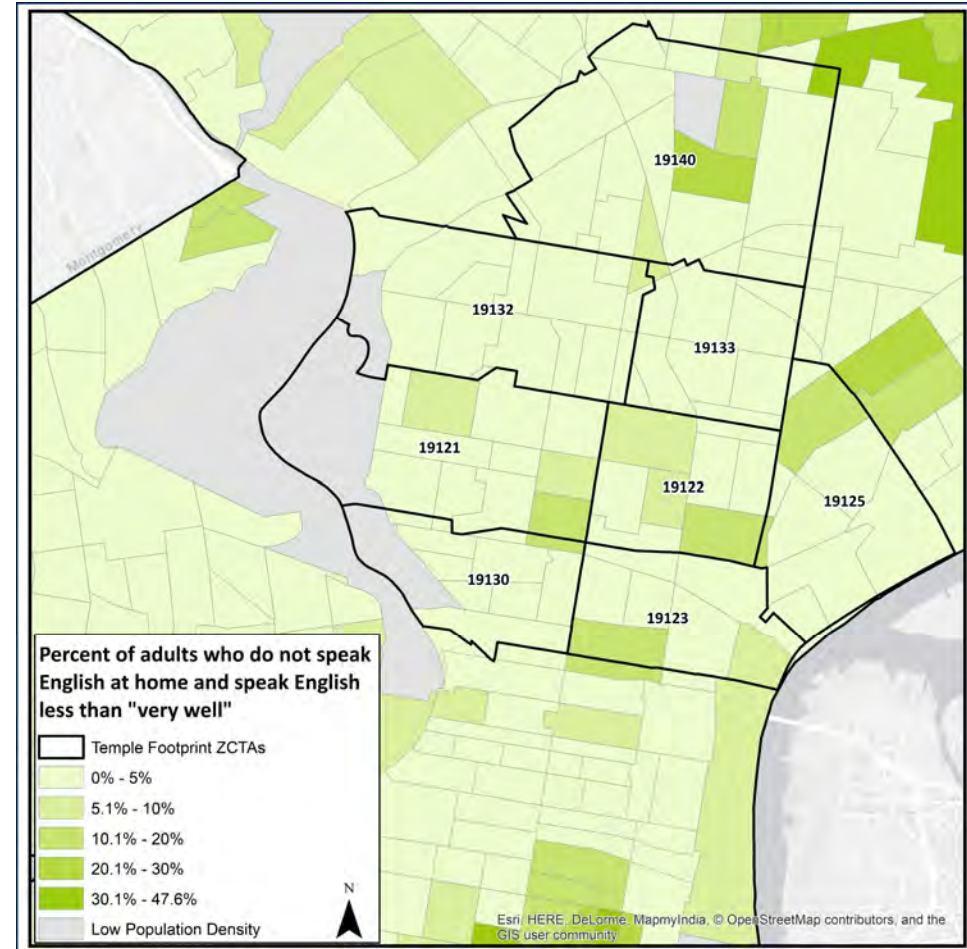
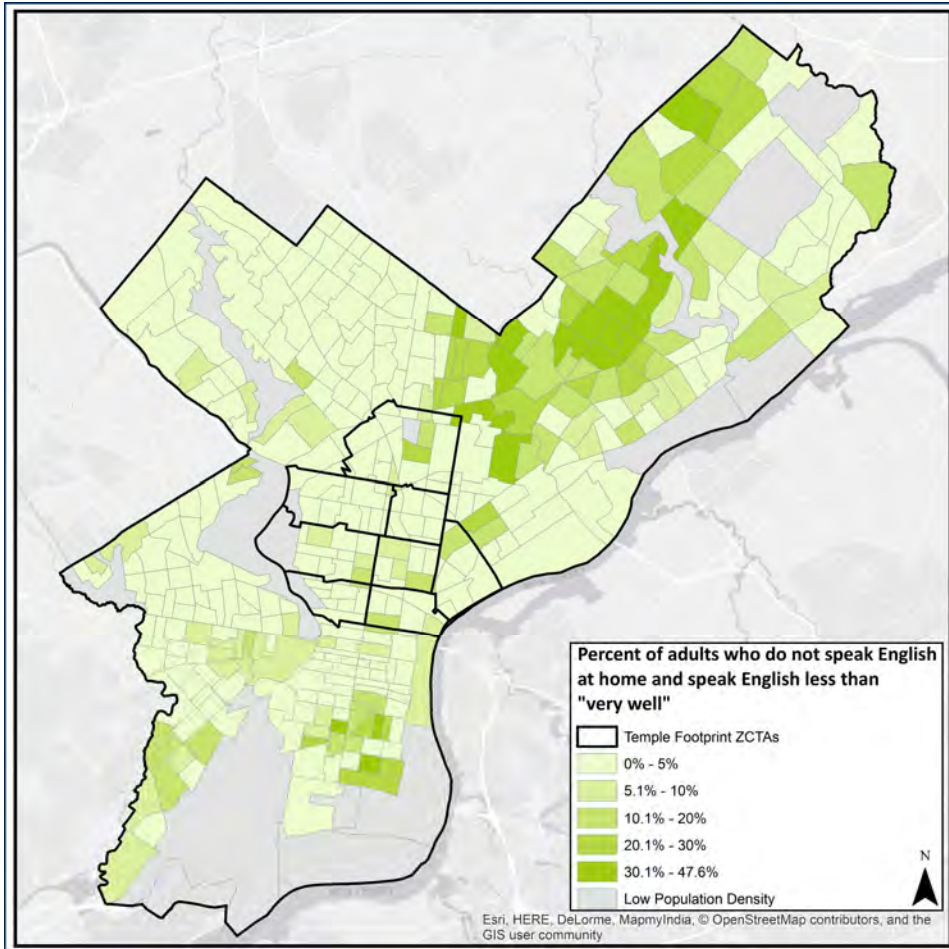
While **29%** of residents speak a language other than English at home, only **7%** report that they are not fluent in English.

English Proficiency



Source: Philadelphia Works analysis of American Community Survey 5-Year Estimates, 2012-2016

English Proficiency

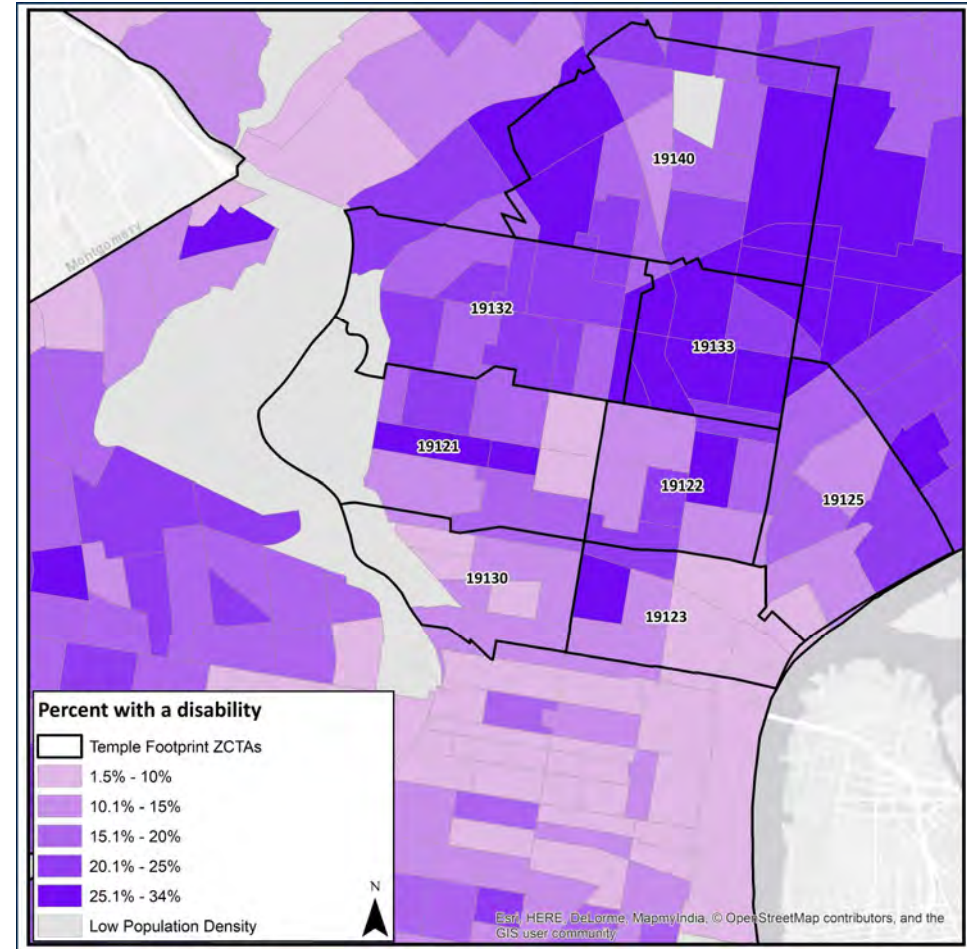
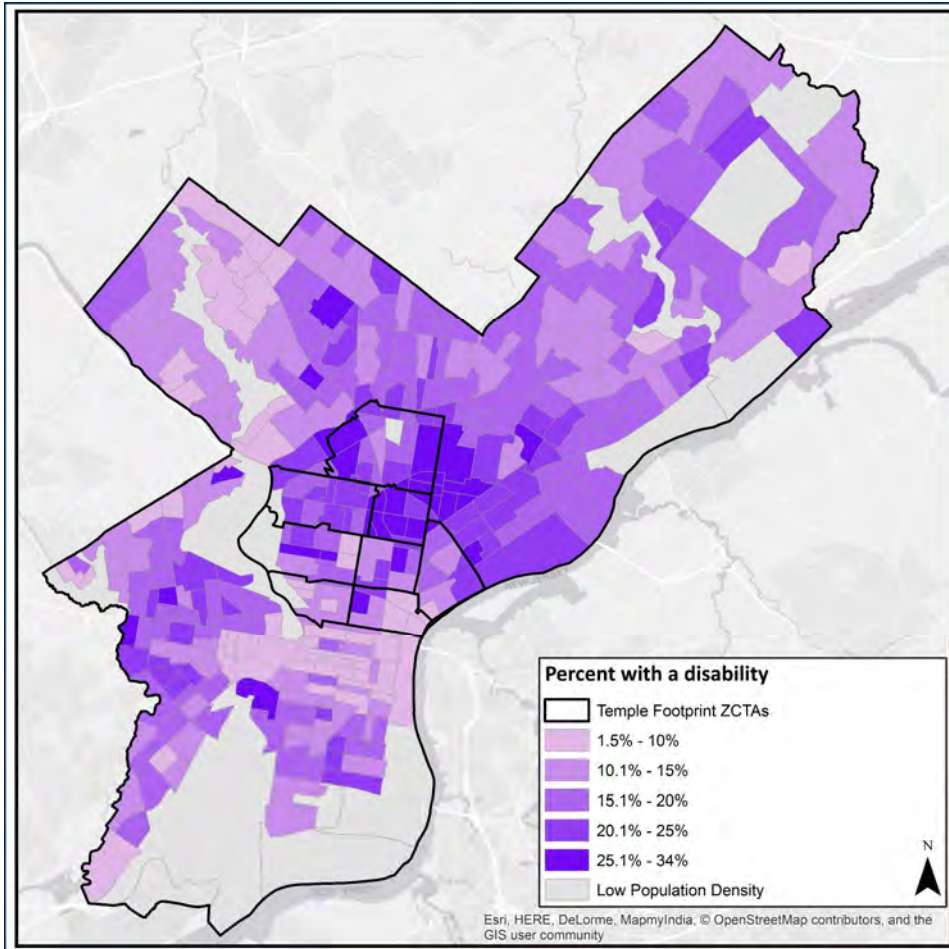


Source: Philadelphia Works analysis of American Community Survey 5-Year Estimates, 2012-2016

Disability

1 in 5 residents have at least
one disability.

Individuals with any Disability

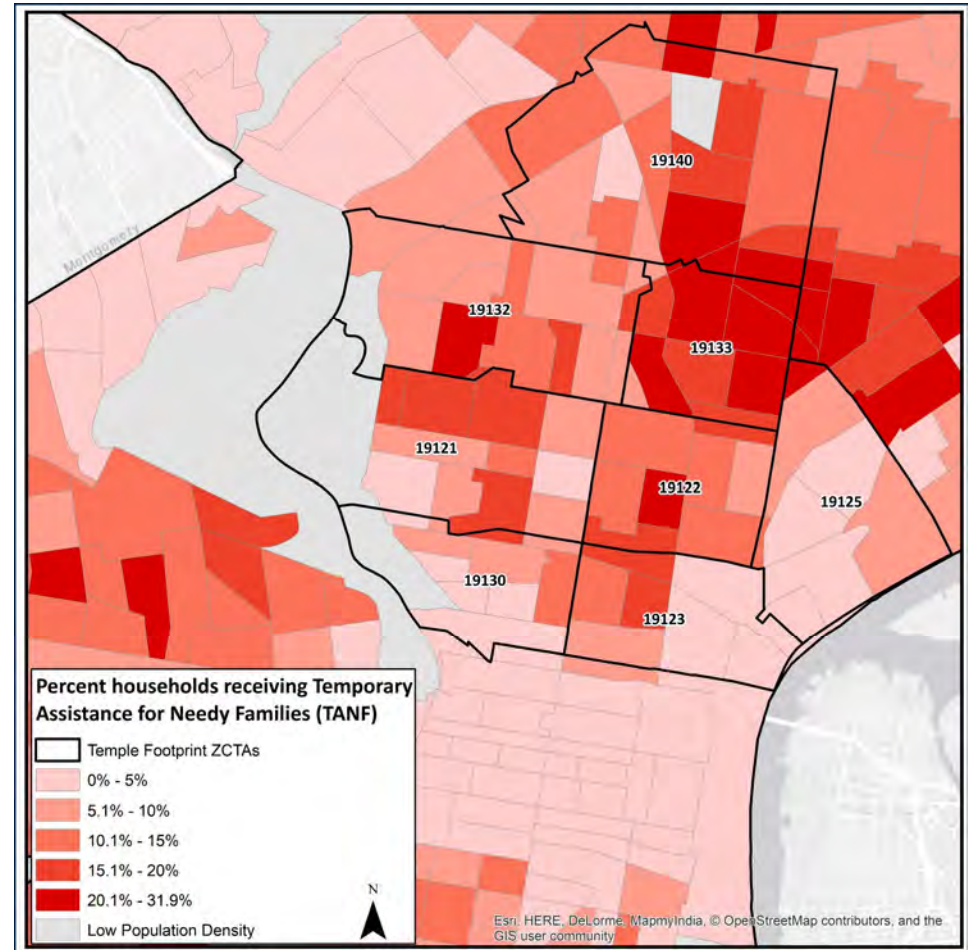
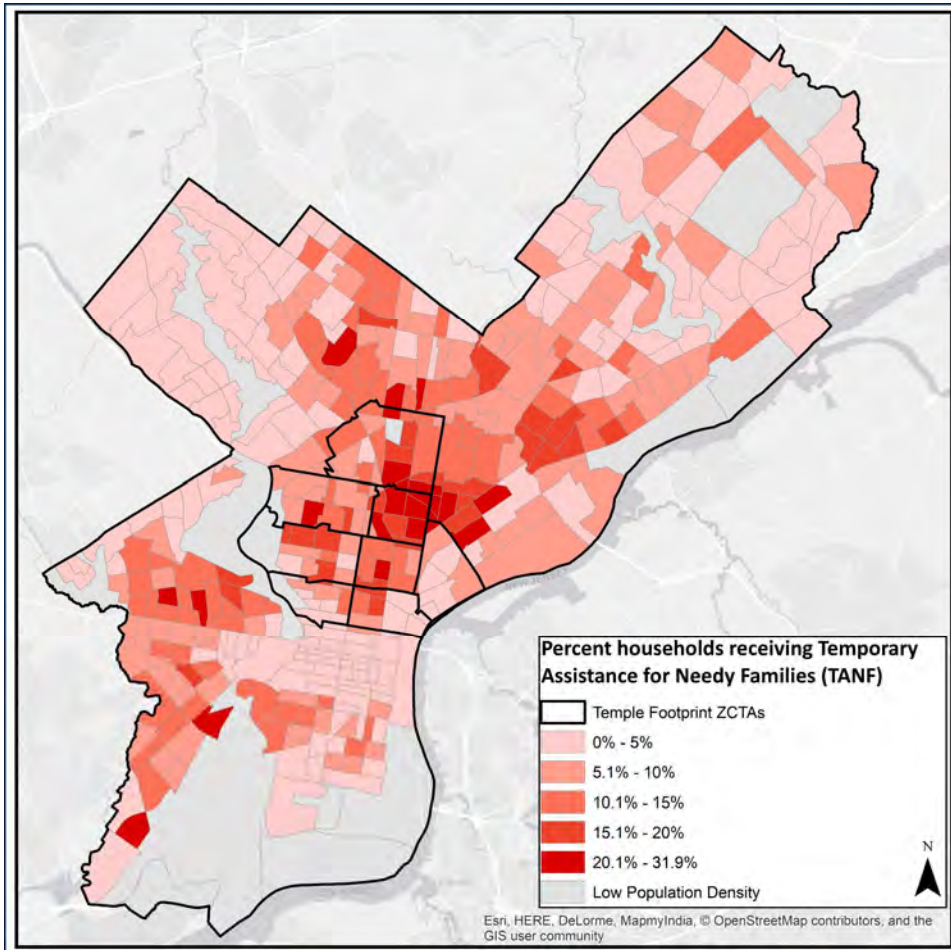


Source: Philadelphia Works analysis of American Community Survey 5-Year Estimates, 2012-2016

Benefit Recipients

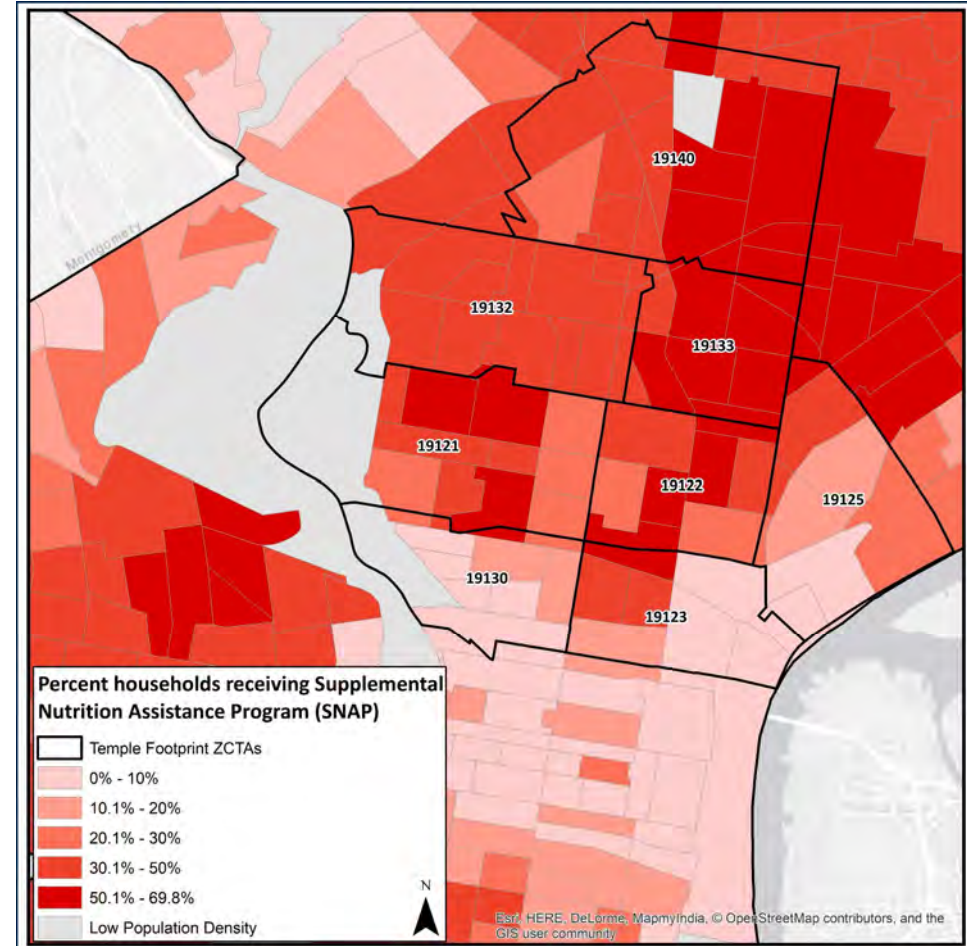
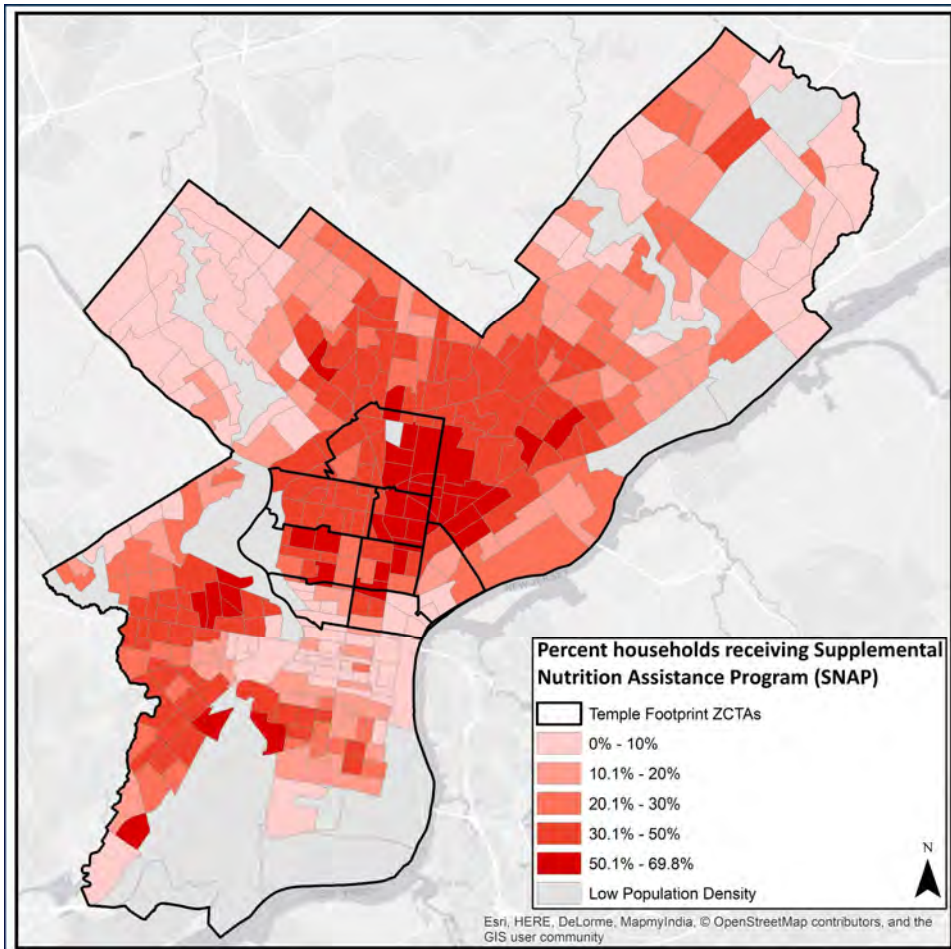
13% of households in the LNPWI Area receive TANF, and 43% receive SNAP.

TANF Recipients



Source: Philadelphia Works analysis of American Community Survey 5-Year Estimates, 2012-2016

SNAP Recipients

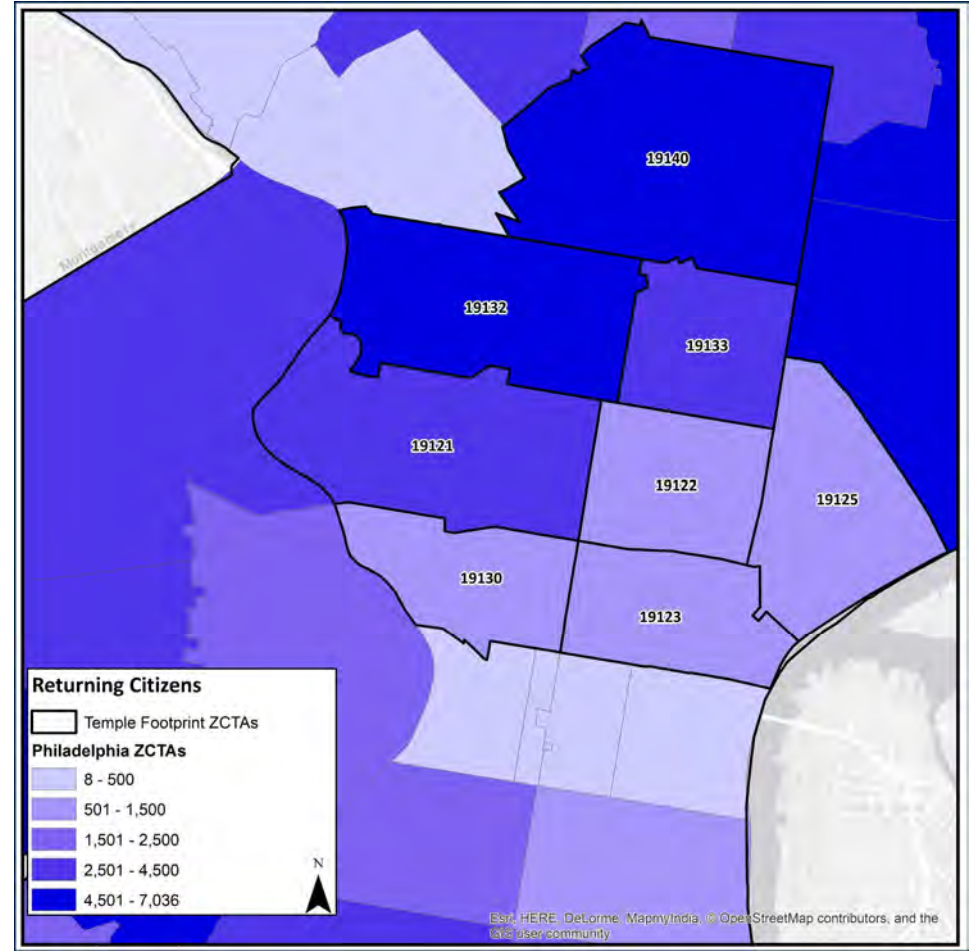
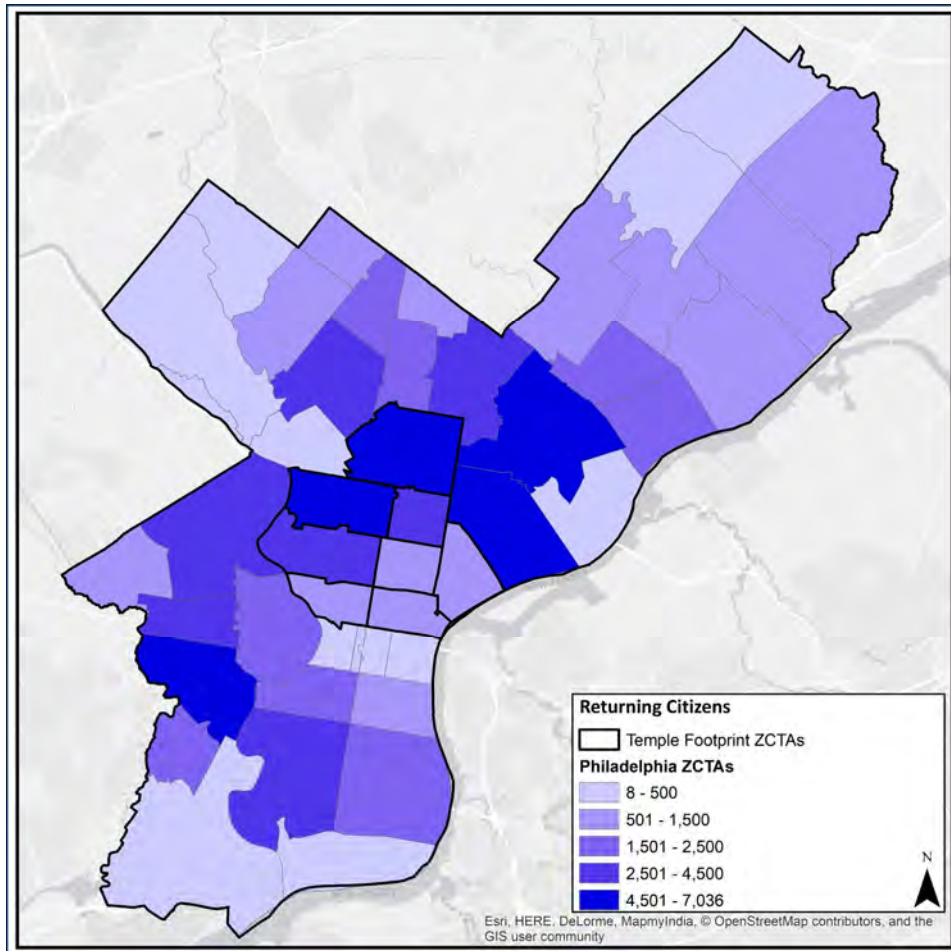


Source: Philadelphia Works analysis of American Community Survey 5-Year Estimates, 2012-2016

Returning Citizens

In the last 6 years, the **23,200** returning citizens in the Target Area make up **26%** of the total returning citizens in Philadelphia.

Returning Citizens

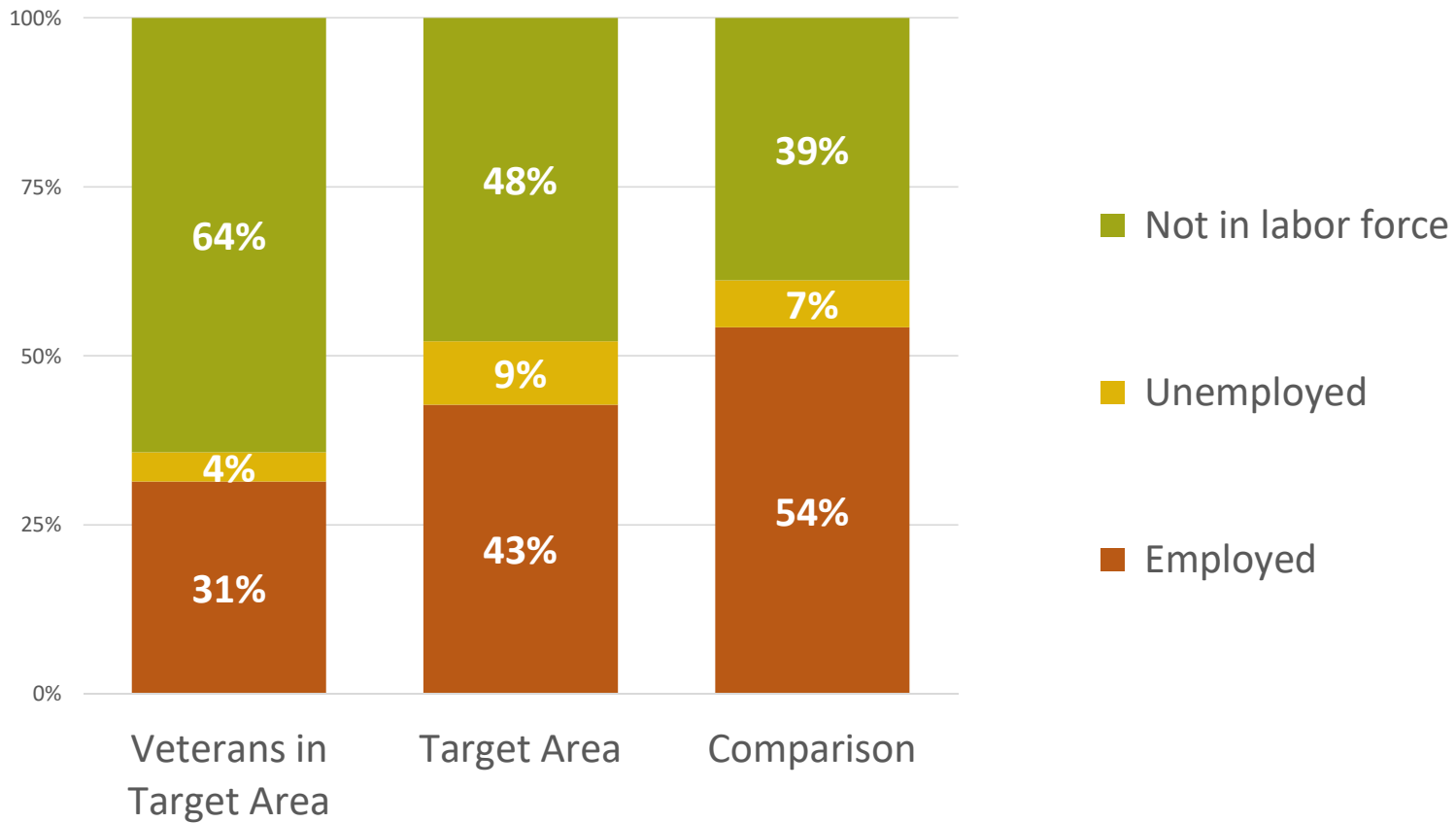


Source: Philadelphia Department of Prisons, 2013 – Nov 2018

Veterans

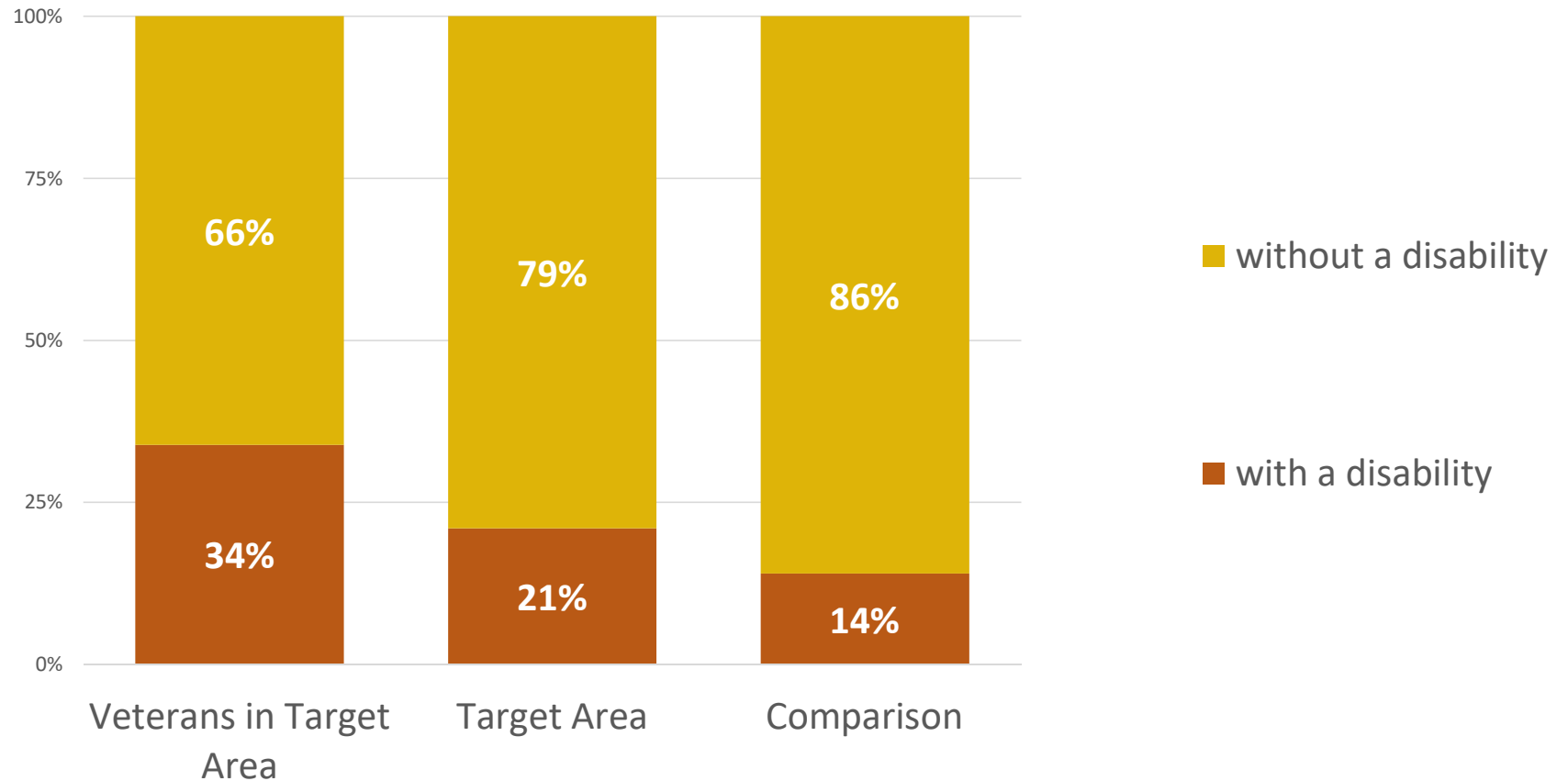
4% of residents 18 years and
over are **veterans**.

Veterans - Employment



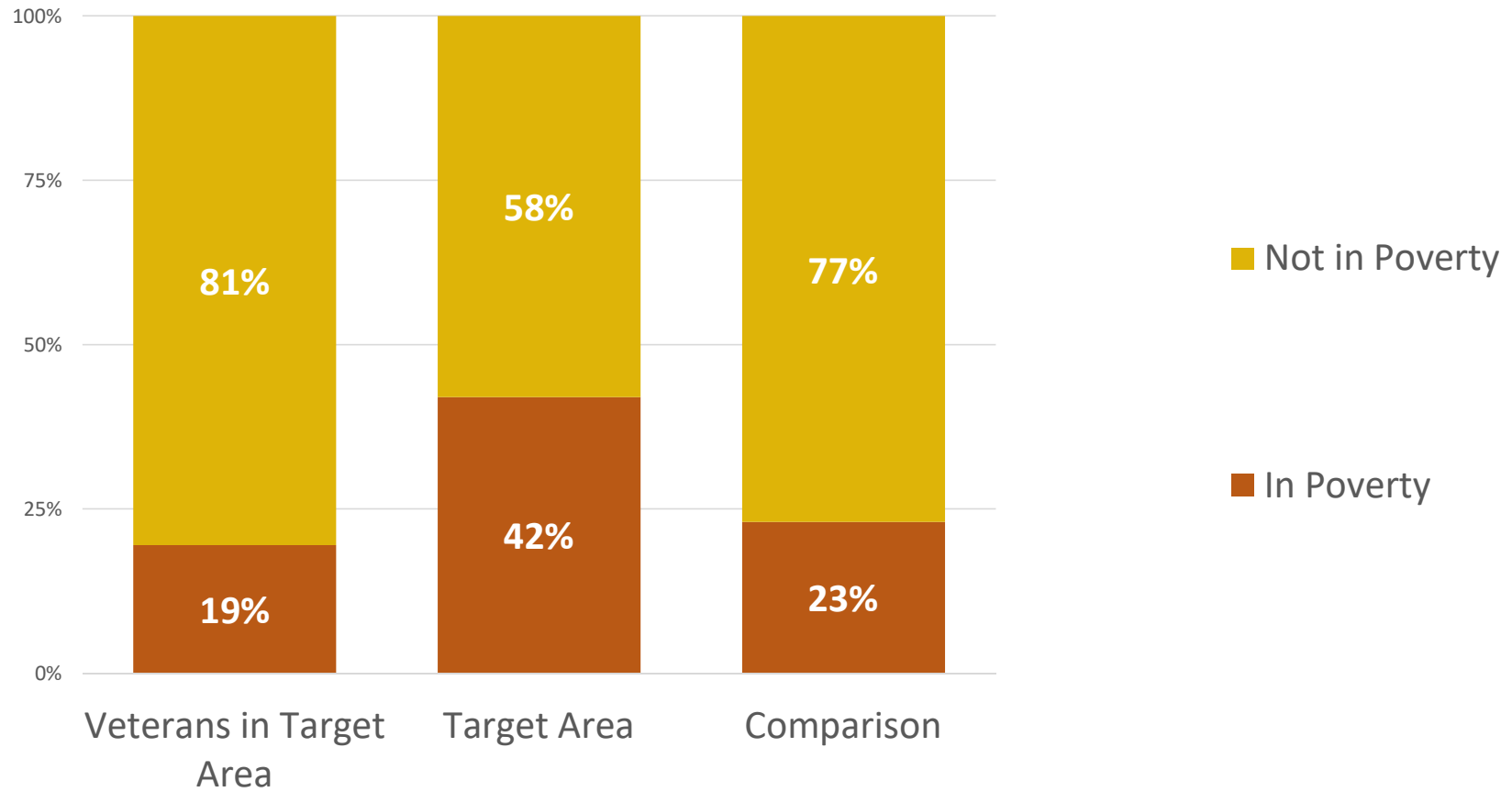
Source: Philadelphia Works analysis of ACS PUMS, 2012-2016

Veterans – Disability Status



Source: Philadelphia Works analysis of ACS PUMS, 2012-2016

Veterans - Poverty



Source: Philadelphia Works analysis of ACS PUMS, 2012-2016

Opportunity
Youth

24% of people between the ages of 16 and 24 are **neither in school nor working.**

Opportunity Youth

Residents of LNPWI Area between the ages of 16 to 24



Source: Philadelphia Works analysis of ACS PUMS, 2012-2016

Priority Population

	Target Area	Comparison
Immigrants	7%	14%
ESL Population	7%	6%
Disability	21%	16%
TANF Recipients	13%	7%
SNAP Recipients	43%	21%
Opportunity Youth	24%	17%
Returning Citizens	23,200 (2013-2018)	64,471 (2013-2018)
Veterans	4%	6%

Source: Philadelphia Works analysis of ACS PUMS, 2012-2016
Philadelphia Department of Prisons, 2013 – Nov 2018

Community Resources

**PA CareerLink®
Philadelphia Services**

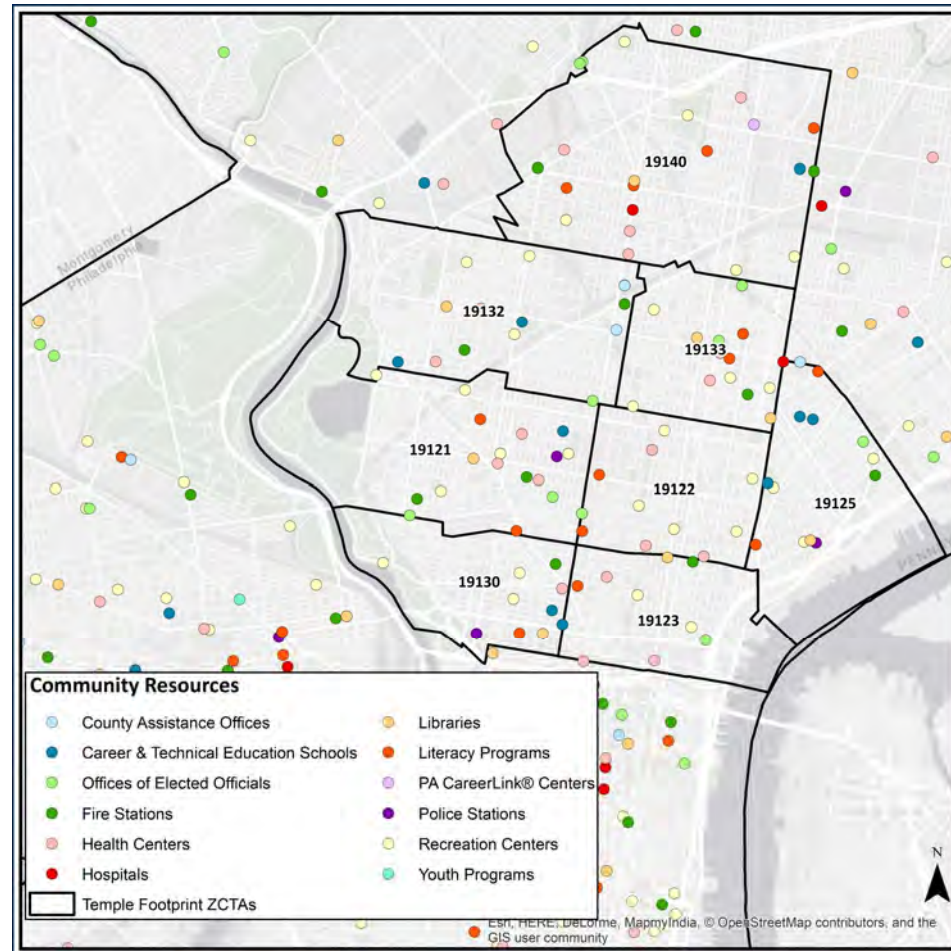
**Philadelphia Works
Investments**

Resources and Investments

Community Resources

The LNPWI Area is served by a number of resources, including
**Libraries, Hospitals,
CTE Schools, and
Recreation Centers.**

Community Resources

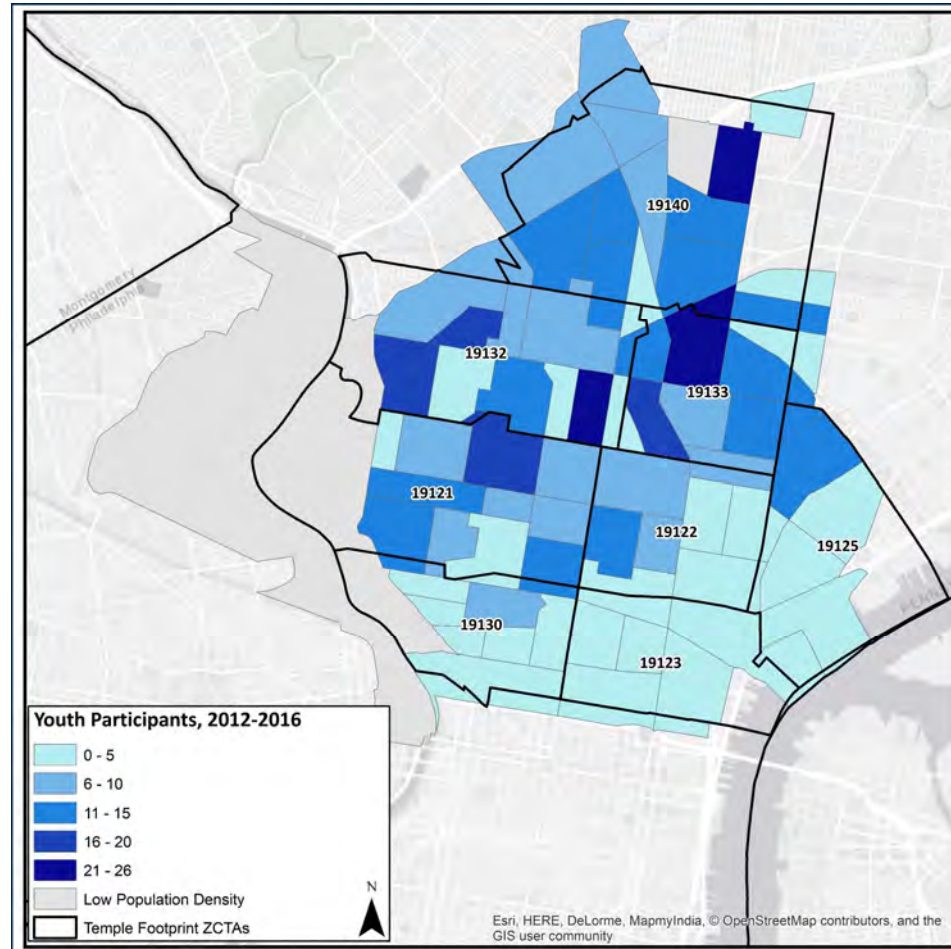


Source:
Philadelphia Works
analysis of online
databases

PA CareerLink®
Philadelphia
Services

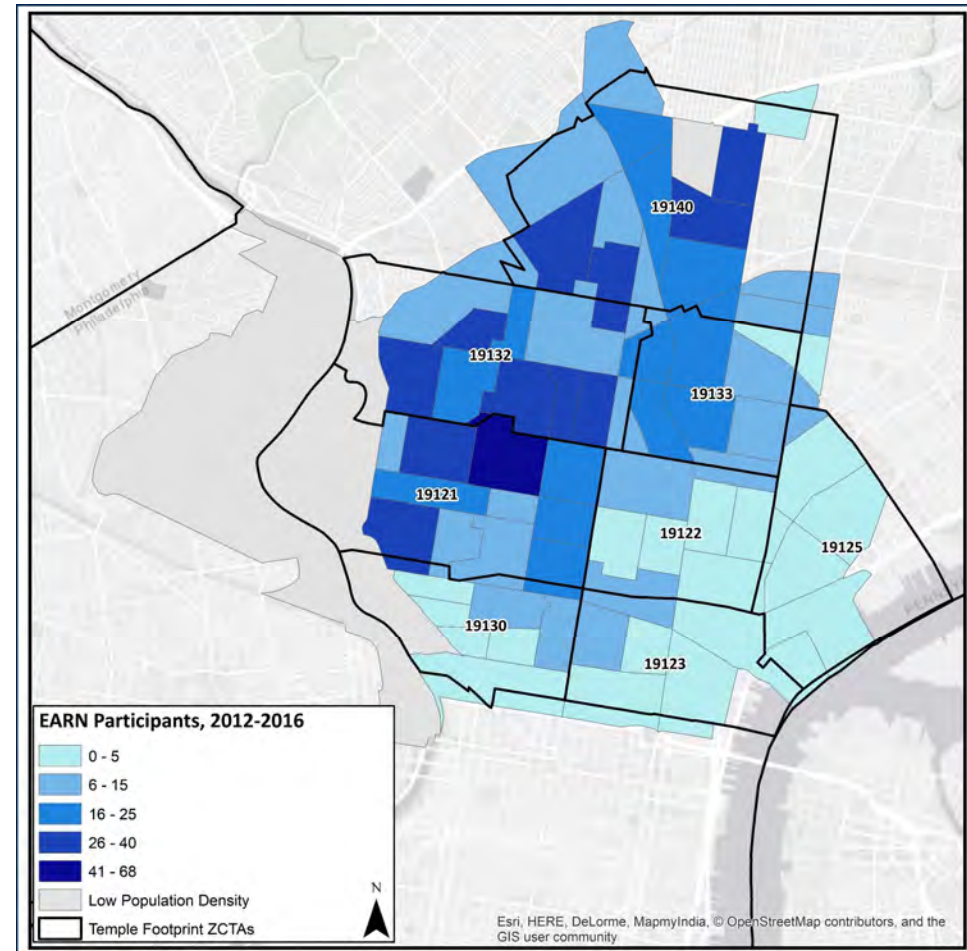
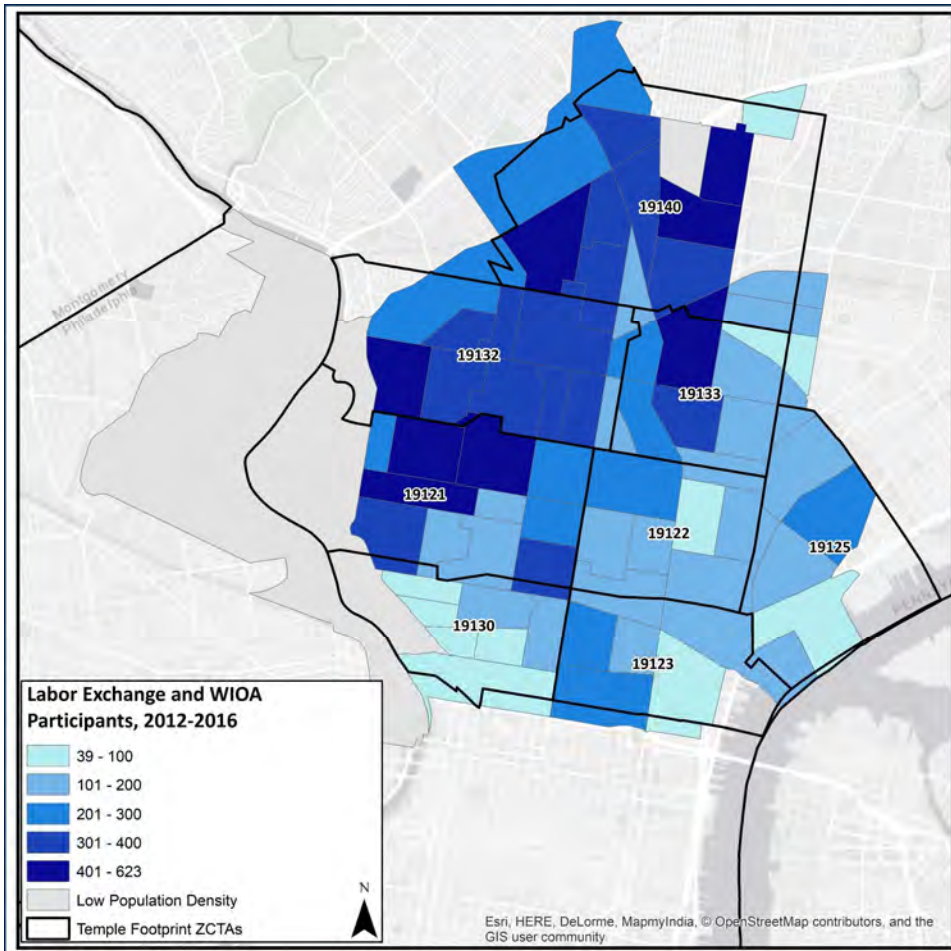
Between 2012-2016, more than
18,500 residents of the LNPWI
Area were served by the PA
CareerLink® Philadelphia system.

Participants in Youth Workforce Development Programs, 2012 - 2016



Source:
*Philadelphia Works
analysis of CWDS*

PA CareerLink® Philadelphia Participants, 2012-2016

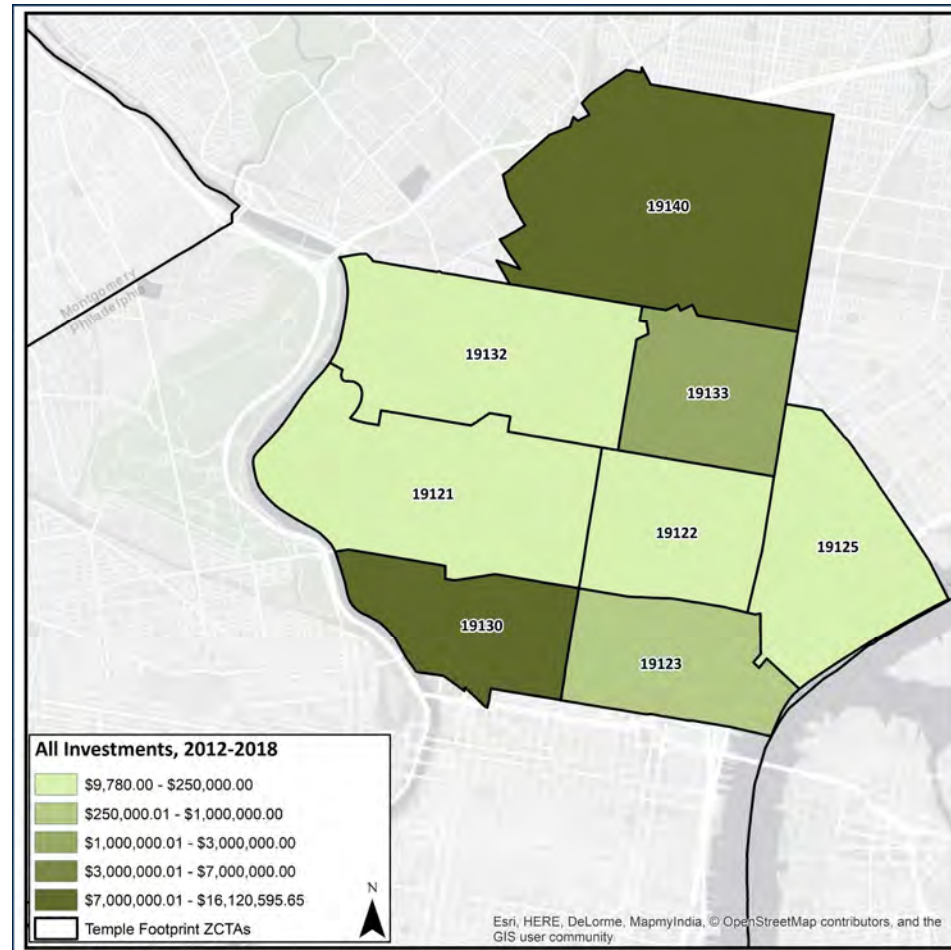


Source: Philadelphia Works analysis of CWDS

Philadelphia Works Investments

Between 2012-2016,
Philadelphia Works invested
nearly **\$28 million** in
workforce initiatives and
programs in the LNPWI Area.

Philadelphia Works Investments, 2012-2016



Source:
Philadelphia Works
analysis of CMS

Lenfest North Philadelphia Workforce Initiative Area by the Numbers

275,453 residents

43% employment rate

\$25,000 median income

32% Hispanic/Latino

1 in 4 residents 25-64 don't have a high school diploma

7% are not fluent in English

1 in 5 residents have at least one disability

4% of residents 18 years and over are veterans

24% of residents 16 to 24 are opportunity youth

23,200 returning citizens in the last 6 years



<http://www.philaworks.org>

Meg Shope Koppel, Ph.D.
Chief Research Officer
mshopekoppel@philaworks.org